



DOOR CONTROL

Cerniere idrauliche e chiudiporta

Hydraulic hinges and floor springs
Bisagras hidráulicas y cierrapuertas



Finiture Finishes | Acabados

Alluminio | Aluminum | Aluminio



610
Grezzo
Non anodized
Sin anodizar



611
Anodizzato naturale
Silver anodized
Anodizado natural



613
Anodizzato champagne
Champagne anodized
Anodizado champagne



614
Anodizzato bronzo chiaro
Light bronze anodized
Anodizado bronce medio



615
Anodizzato bronzo scuro
Dark bronze anodized
Anodizado bronce oscuro



620
Anodizzato nero
Black anodized
Anodizado negro

Ottone | Brass



710
Satinato
Satin
Satinado



712
Lucido
Polished
Brillante

Acciaio inox | Stainless steel



810
Satinato
Satin
Satinado



812
Lucido
Polished
Brillante

Finiture speciali Special finishes | Acabados especiales

Alluminio | Aluminum | Aluminio



665
Cromato opaco
Matt chrome
Cromado opaco



666
Cromato lucido
Polished chrome
Cromado brillo

Ottone | Brass | Latón



770
Cromato opaco
Matt chrome
Cromado opaco



771
Cromato lucido
Polished chrome
Cromado brillo

Acciaio inox | Stainless steel | Acero inoxidable



868
Cromato opaco
Matt chrome
Cromado opaco



869
Cromato lucido
Polished chrome
Cromado brillo

Su richiesta | Upon request | Bajo pedido



Scopri la nostra gamma di colori disponibili su richiesta.
Discover our range of colors available upon request.
Descubre nuestra gama de colores disponible a pedido.

Finiture: grado di resistenza alla corrosione

Finishes: degree of corrosion resistance

Acabados: grado de resistencia a la corrosión

| Materiale Material | Finiture Finishes | Interno Internal | | Esterno External | |
|-----------------------|----------------------|---------------------|-----------------------|--|--|
| | | Porte Doors | Box doccia Showers | Condizioni standard Standard environments | Condizioni particolari Special environments |
| AL ALU | 610 | 4 | 4 | 4 | 1 |
| AL ALU | 611 | 4 | 4 | 4 | 4 |
| AL ALU | 613 | 4 | 2 | 2 | 1 |
| AL ALU | 614 | 4 | 2 | 2 | 1 |
| AL ALU | 615 | 4 | 2 | 2 | 4 |
| AL ALU | 620 | 4 | 4 | 4 | 1 |
| AL ALU | 665 | 4 | 3 | 3 | |
| AL ALU | 666 | 4 | 3 | 3 | |
| OT BRASS | 710 | 5 | 5* | 5* | 5* |
| OT BRASS | 712 | 5 | 5* | 5* | 5* |
| OT BRASS | 770 | 5 | 5* | 5* | 5* |
| OT BRASS | 771 | 5 | 5* | 5* | 5* |
| INOX | 810 | 5 | 5* | 5* | 5* |
| INOX | 812 | 5 | 5* | 5* | 5* |
| INOX | 868 | 5 | 5 | 5 | 5 |
| INOX | 869 | 5 | 5 | 5 | 5 |

*ATTENZIONE: Per installazioni in condizioni ambientali e climatiche particolari (es. umide, acide e saline) è necessaria la zaponatura, finitura ottenuta su ottone grezzo che ha lo scopo di proteggere il materiale dalla naturale ossidazione se non soggetto a pulizia costante in caso di esposizione a condizioni sfavorevoli.

CAUTION: For installations in particular environments or climate (ex. wet, acid, saline) you need to use a varnish brass (a finishes that protect brass from its natural oxidation in case of exposure to unfavorable environmental conditions).

ATENCIÓN: Para instalaciones en condiciones ambientales particulares (ej. húmedas, ácidas y salinas) es necesario el tratamiento con pintura para latón (un acabado que protege el latón contra su natural oxidación en caso de exposición en condiciones desfavorables).

Legenda | Legend | Leyenda



Opzionale | dettagli tecnici che influiscono sulla funzionalità
Optional | Technical details that affect the functionality
Opcional | indicaciones técnicas que afectan el funcionamiento



Larghezza anta
Max. door width
Max. ancho de la puerta



Spessore vetro
Glass thickness
Espesor del vidrio



Portata
Weight
Peso



Testato a 500000 cicli come previsto da EN 1527
Tested at 500000 cycles as required by the UNI EN 1527
Testado a 500 000 ciclos como UNI EN 1527



Indicato per docce e saune
Suitable for showers and saunas
Indicado para duchas y saunas



Temperatura tollerabile
Temperature
Temperatura



PROGETTIAMO
DESIGN | DISEÑAMOS

Soluzioni innovative per sistemi in vetro, intelaiati e legno.

Innovative solutions for glass, framed and wooden systems. Soluciones innovadoras para sistemas en vidrio, madera y con marco

Controllo porte
Floor spings
Cierra puertas

Porte interne
Internal doors
Puertas interiores

PRODUCIAMO
MANUFACTURE | PRODUCIMOS

Più di 3800 accessori per sistemi in vetro.
More than 3800 accessories for all-glass tempered installations.
Más de 3800 accesorios para instalaciones de vidrio templado.

OEM

Mettiamo a disposizione il nostro know-how per la realizzazione di progetti su misura.

We provide our know-how for customised projects. Ofrecemos nuestro know-how para proyectos a medida.

Porte esterne
External doors
Puertas exteriores



Sistemi scorrevoli
Sliding systems
Sistemas deslizantes

COMMERCIALIZZIAMO
COMMERCIALIZE | COMERCIALIZAMOS

In più di 48 paesi grazie ad un fitto network distributivo.

In more than 48 countries with our distributive network. En más de 48 países con nuestra red de distribución.

ODM

Produciamo accessori su incarico delle industrie.

We produce accessories upon industries request. Producimos accesorios a petición de la industria.

Partizioni
Glass partitions
Particiones

Sistemi doccia
Showers
Duchas



Cerniere idrauliche

Hydraulic hinges | Bisagras hidráulicas





Larghezza max dell'anta
Max door width
Ancho de la puerta
1000 mm
39-3/8"



Spessore vetro
Glass thickness
Espesor del vidrio
8 ÷ 14 mm
5/16 ÷ 9/16"

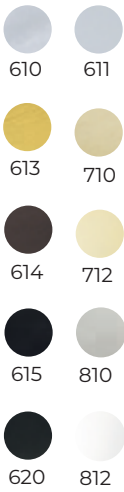


Peso max
Door weight
Peso máximo
100 kg
220 Lbs



Testata
Tested
Testado
500.000 cicli
cycle - ciclos

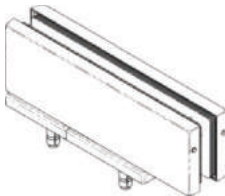
Finiture
Finishing
Acabados



4FRXK

KIT Cerniera idraulica
KIT Hydraulic hinge
KIT Bisagra hidráulica

4FRXN
Cerniera idraulica
Hydraulic hinge
Bisagra hidráulica



42800

Cerniera libera
Dummy hinge
Bisagra libre



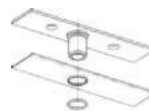
4FR9N

Piastrina a pavimento
Plate
Plaqueta



10180

Perno di rotazione
Pivot
Rotación



10180

Perno di rotazione
Pivot
Rotación

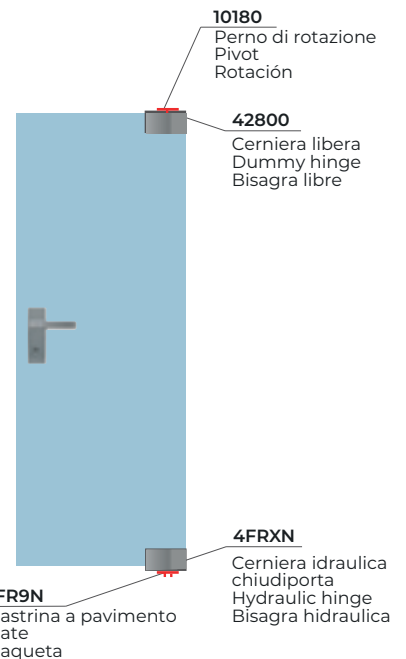
42800

Cerniera libera
Dummy hinge
Bisagra libre

4FRXN

Cerniera idraulica
chiudiporta
Hydraulic hinge
Bisagra hidráulica

4FR9N
Piastrina a pavimento
Plate
Plaqueta



FRENUM

Cerniera idraulica chiudiporta
Hydraulic hinge
Bisagra hidráulica



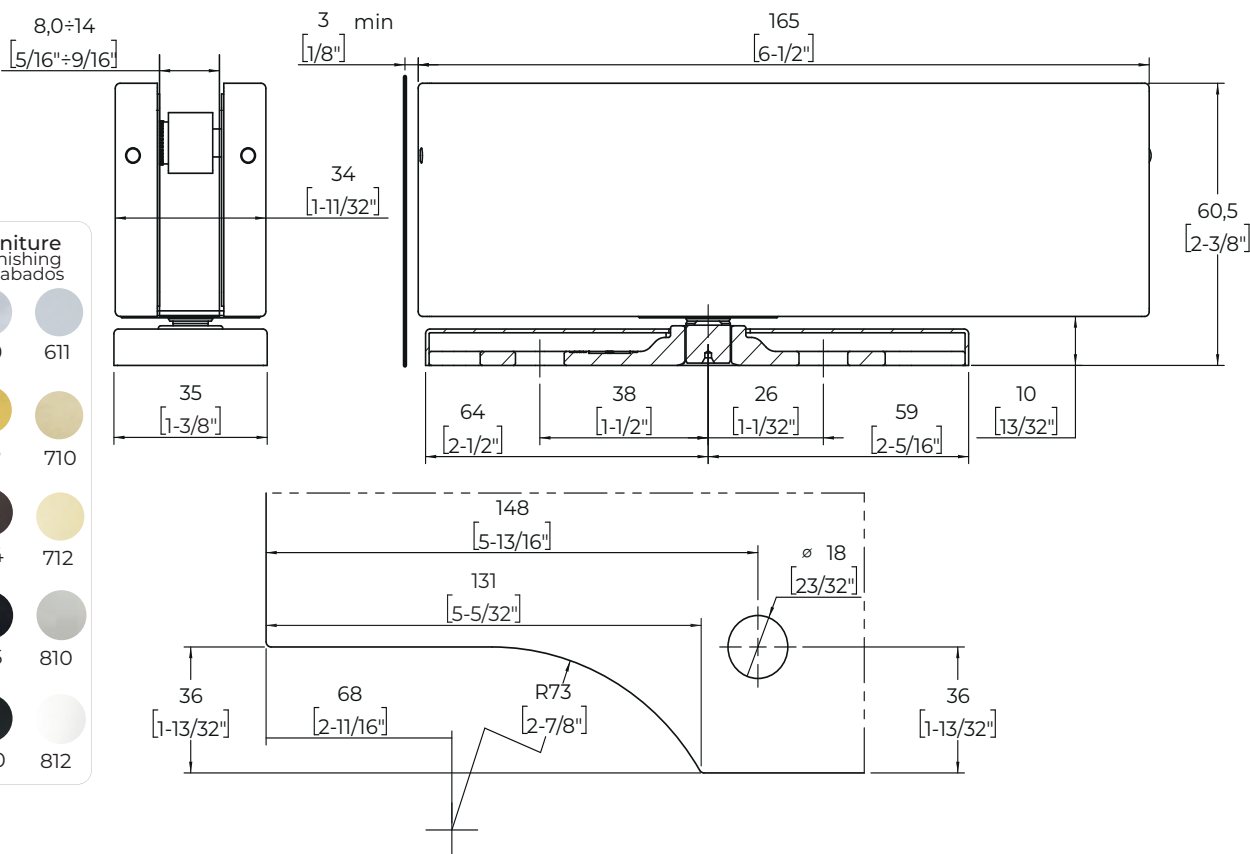
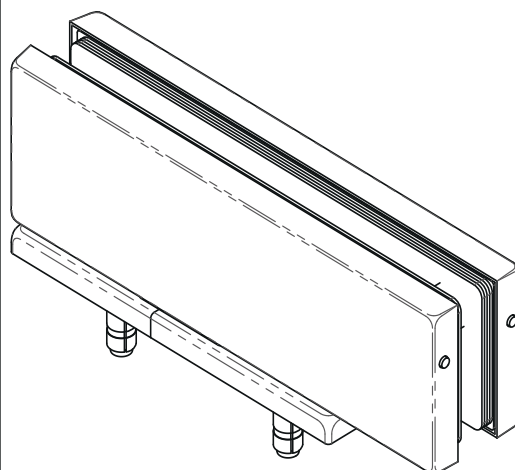
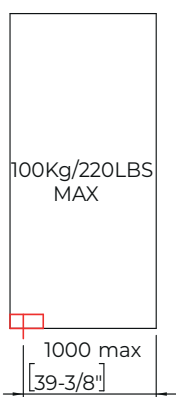
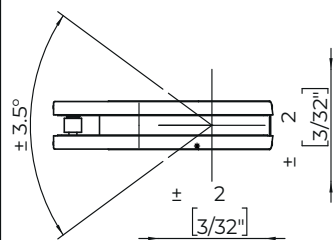
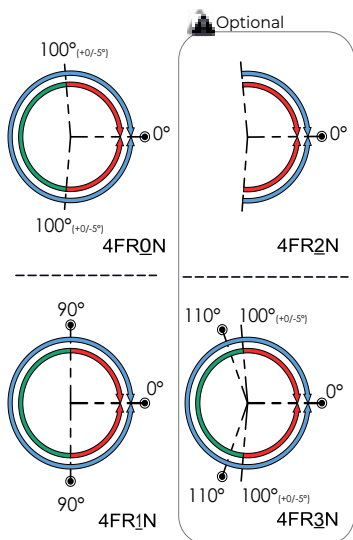
Cod. 4FRXN

Applicazione per vetro ad angolo
Corner glass application
Aplicación en esquina por vidrio



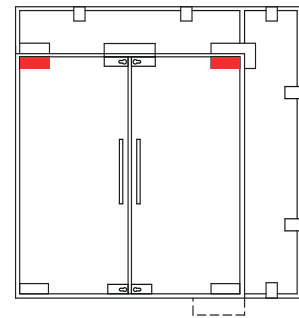
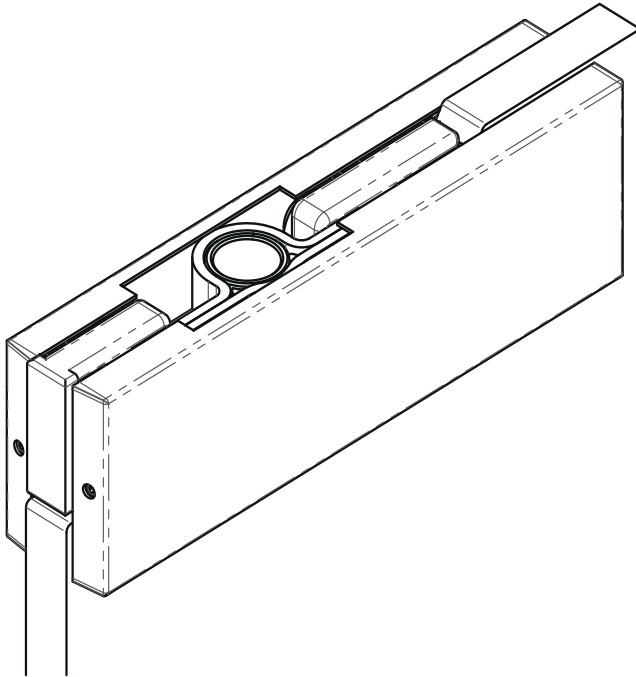
- Possibile posizione della porta
Possible door position
Posible posición de la puerta
- Chiusura controllata
Self-closing
Cierre controlado
- Posizione libera
Free standing
Posición libre
- Stop

Range di regolazione della posizione
Position adjustment range
Rango de regulación de la posición

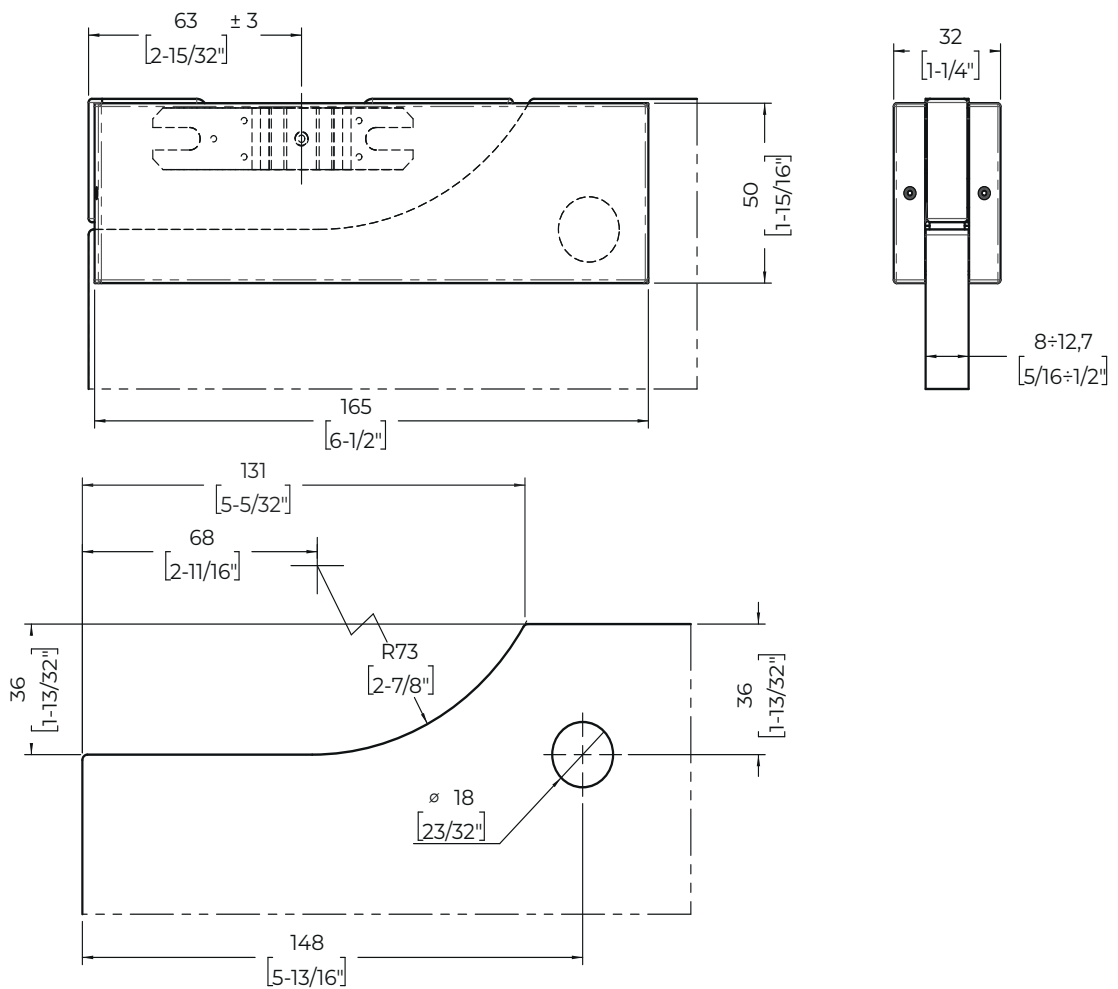


| Finiture Finishing Acabados | |
|-----------------------------------|-----|
| 610 | 611 |
| 613 | 710 |
| 614 | 712 |
| 615 | 810 |
| 620 | 812 |

Applicazione per vetro ad angolo
Corner glass application
Aplicación en esquina por vidrio



| Finiture Finishing Acabados | |
|-----------------------------------|-----|
| | |
| 610 | 710 |
| | |
| 611 | 712 |
| | |
| 613 | 810 |
| | |
| 614 | 812 |
| | |
| 620 | |




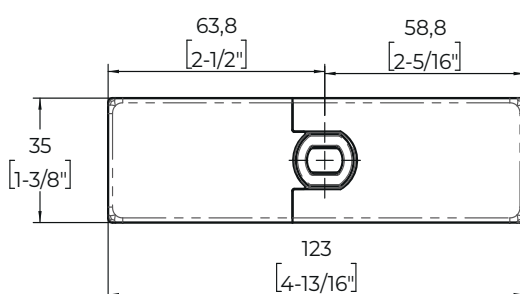
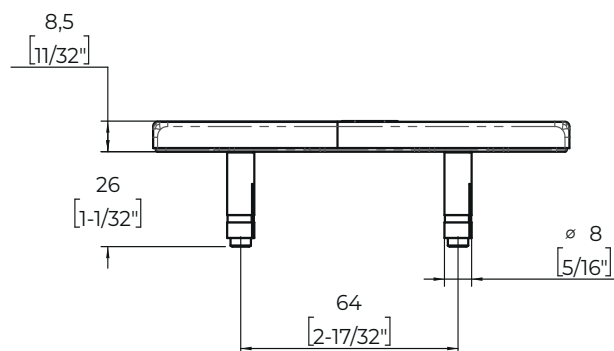
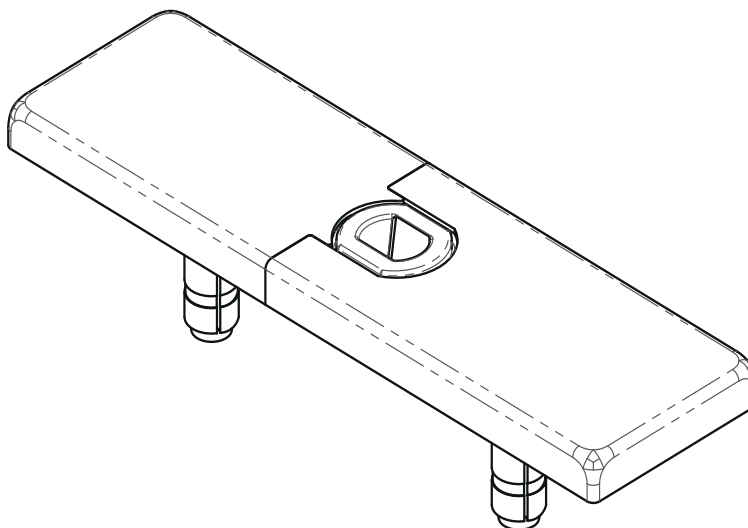
FRENUM










Piastrina a pavimento
Plate
Plaqueta

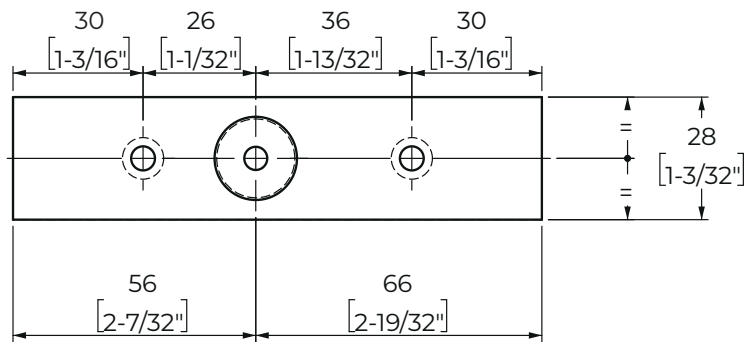
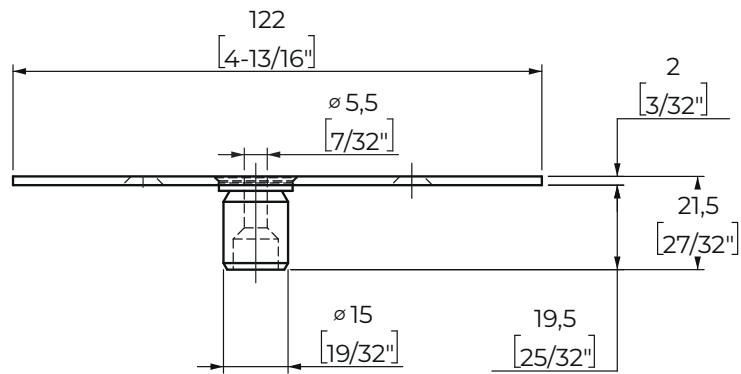
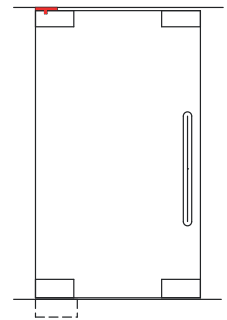
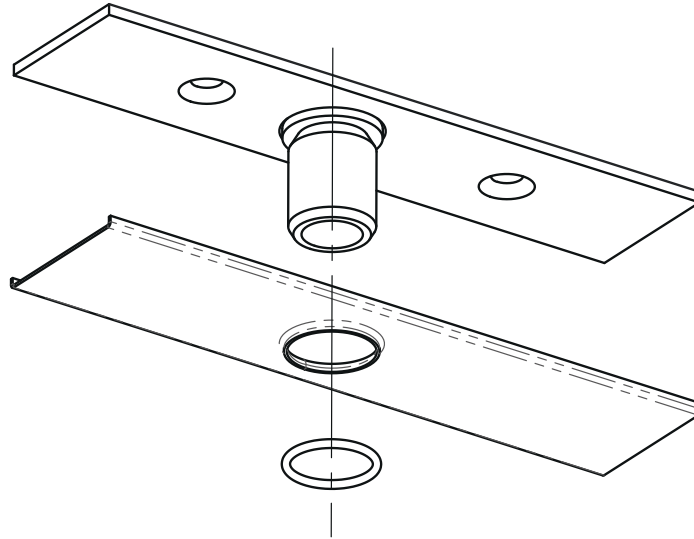


Cod. 4FR9N

 Includa e compatibile con 4FRXN e 4FWXN
Included and compatible with 4FRXN and 4FWXN
Incluido y compatible con 4FRXN y 4FWXN



| Finiture Finishing Acabados | |
|---|---|
|  |  |
| 610 | 710 |
|  |  |
| 611 | 712 |
|  |  |
| 613 | 810 |
|  |  |
| 614 | 812 |
|  | |
| 620 | |



| Finiture Finishing Acabados | |
|-----------------------------------|-----|
| | |
| 610 | 710 |
| | |
| 611 | 712 |
| | |
| 613 | 810 |
| | |
| 614 | 812 |
| | |
| 620 | |



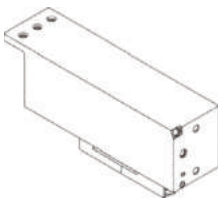
Larghezza max dell'anta
Max door width
Ancho de la puerta
1000 mm
39-3/8"

Kg
Peso max
Door weight
Peso máximo
100 kg
220 Lbs

Testata
Tested
Testado
500.000 cicli -
cycle - ciclos

4FXXN

Cerniera idraulica
per profili
Hydraulic hinge for profiles
Bisagra hidráulica para perfiles



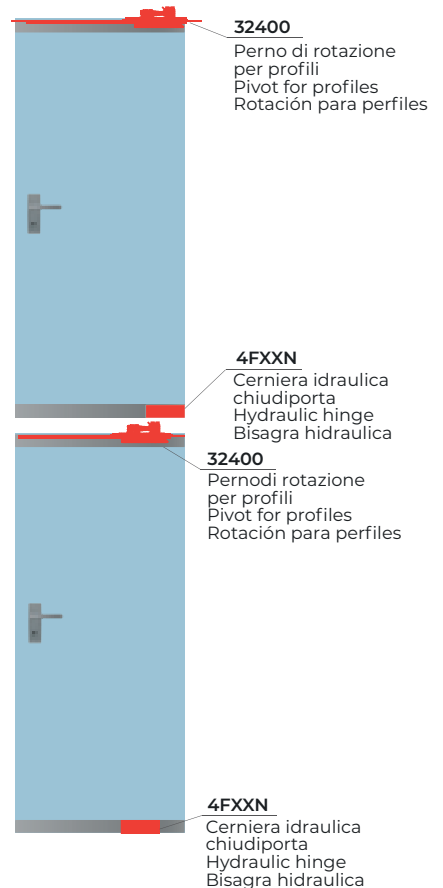
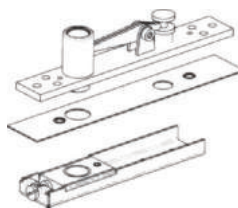
Finiture Finishing Acabados



Opzionale | Optional | Opcional

32400

Punto di rotazione per profili
Pivot for profiles
Rotación para perfiles



FRENUM

Cerniera idraulica chiudiporta
Hydraulic hinge
Bisagra hidráulica

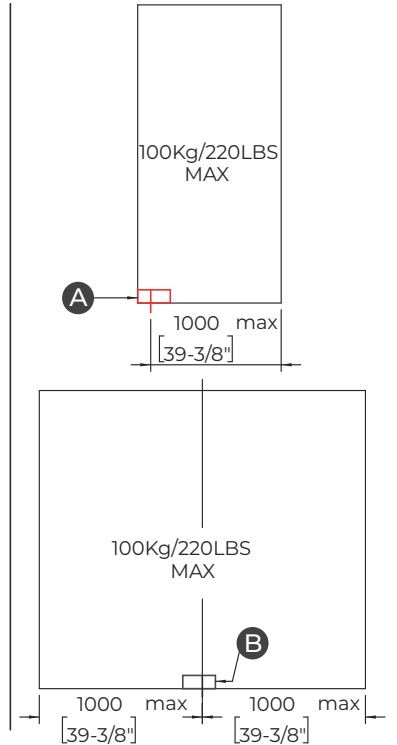
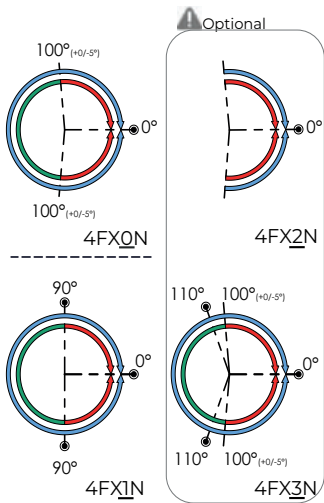


Cod. 4FXXN

Applicazione nel profilo o per legno
In profile or wood application
Aplicación en los perfiles y para madera

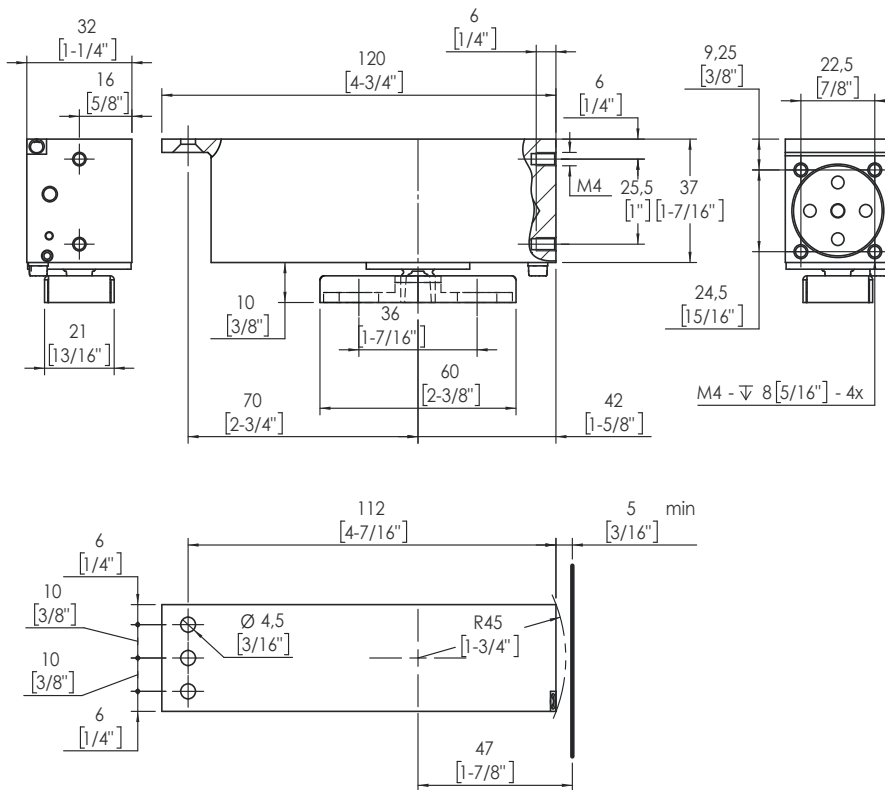
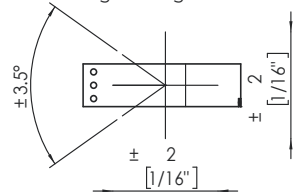


- Possibile posizione della porta
Possible door position
Posible posición de la puerta
- Chiusura controllata
Self-closing
Cierre controlado
- Posizione libera
Free standing
Posición libre
- Stop

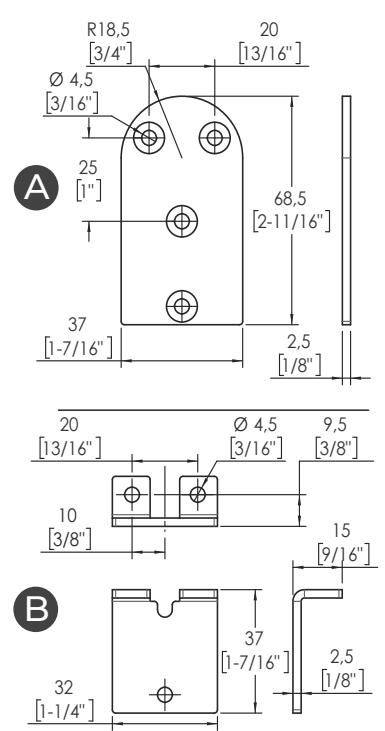


Regolazione della velocità
Speed adjustment
Regulación de la velocidad

Range di regolazione della posizione
Position adjustment range
Rango de regulación de la posición

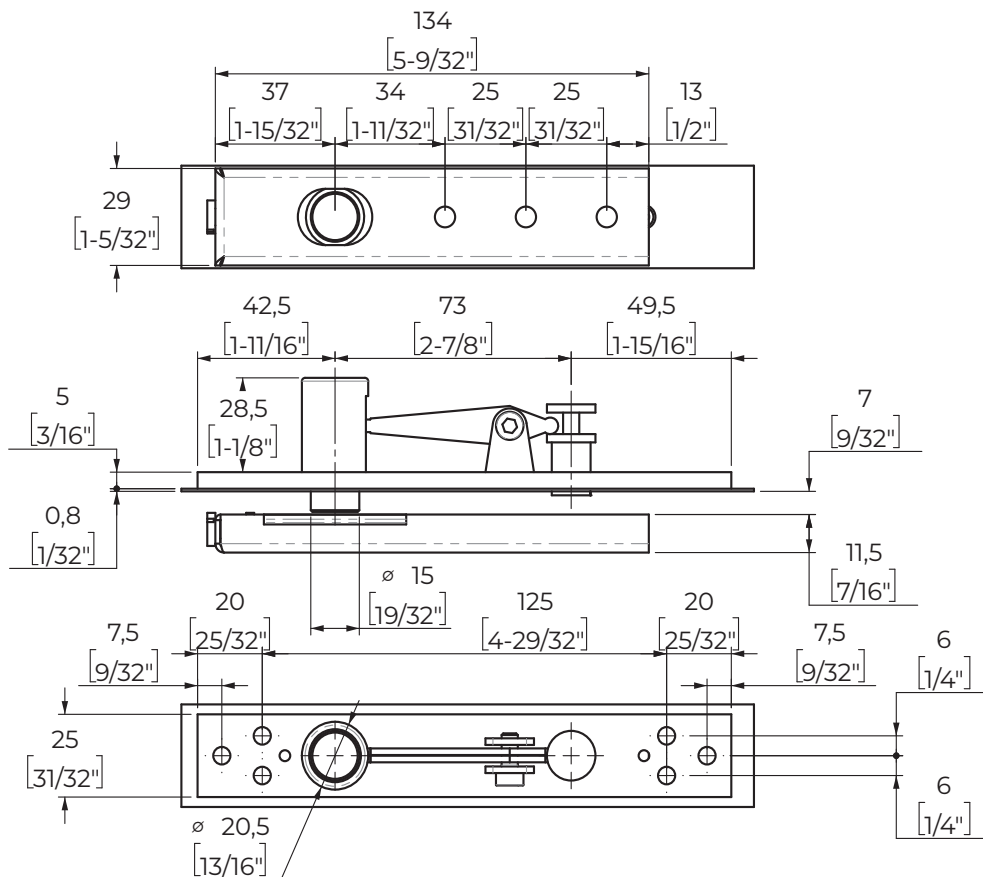
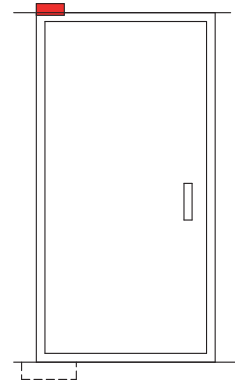
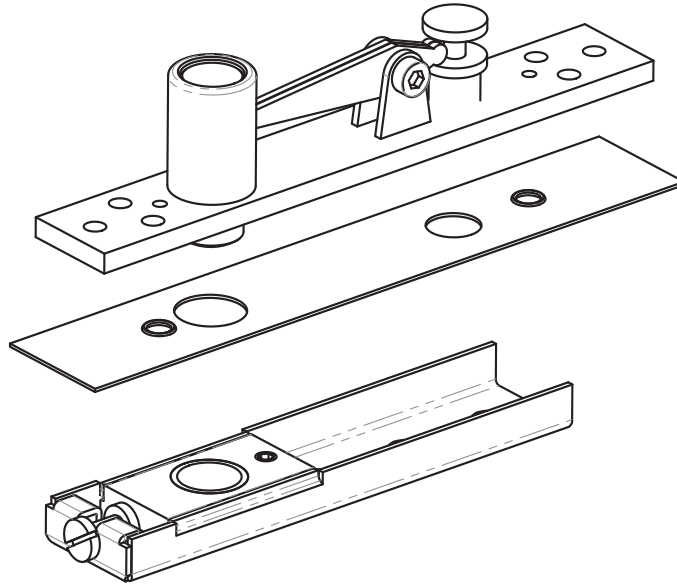


Staffa di fissaggio
Brackets type
Angulo de ensamble



C Personalizzabile a richiesta
Custom on demand
Personalizado bajo pedido

Applicazione nel profilo o per legno
In profile or wood application
Aplicación en los perfiles y para madera



Certificazioni

Certifications | Certificaciones



PSB g 43606/MPA 1997



ETL ANSI A156.4
Report 4671251960



EN 1154 Test Report



UKAS BS 467 part 22:
1967 TRADA FR 1542B 1991



ETL ANSI A156.4
Report 4671251960

