

Pauli + Sohn

KONSTRUKTIVER GLASBAU

CONSTRUCTIVE GLASS BUILDING

Brüstungssysteme

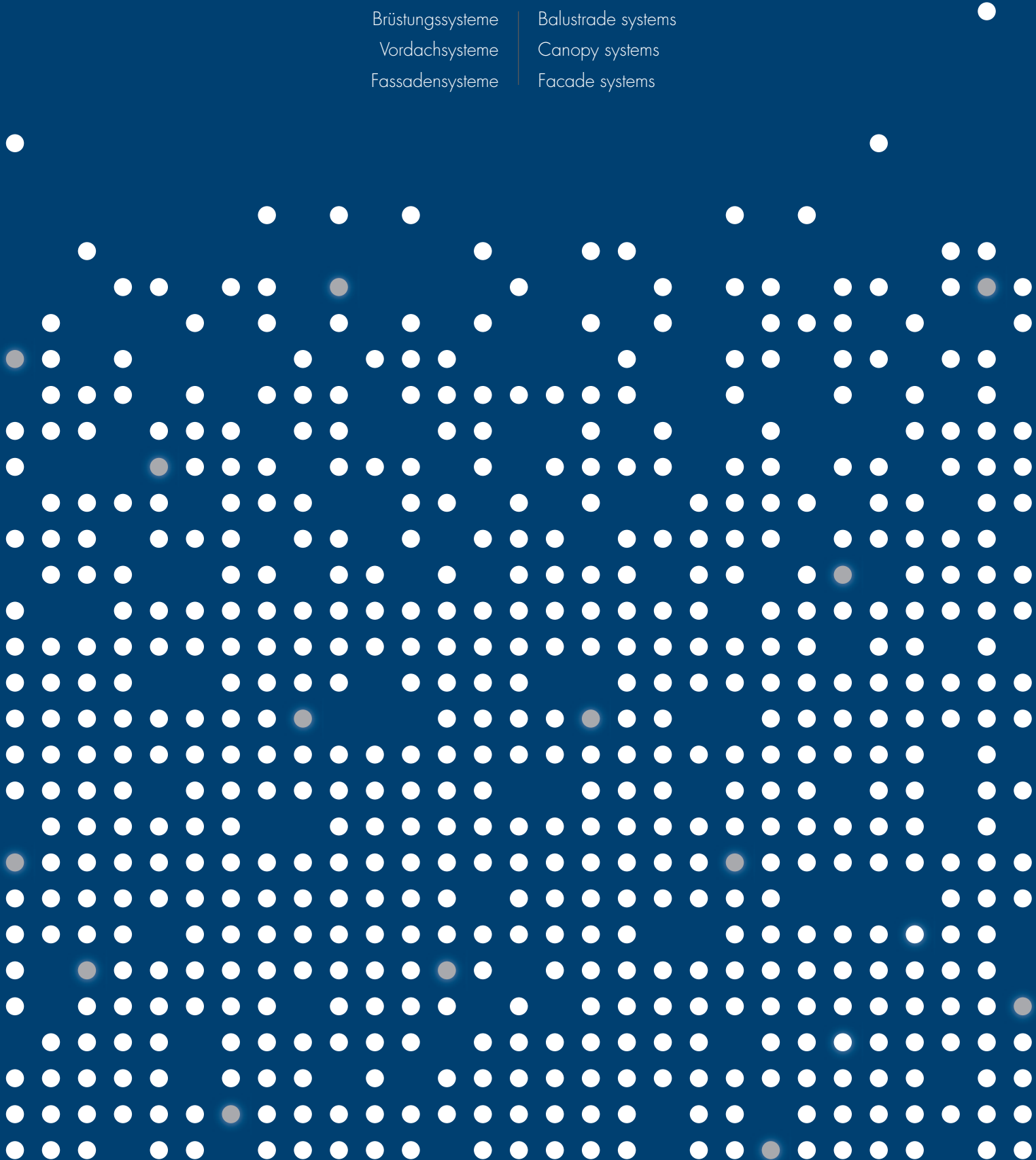
Balustrade systems

Vordachsysteme

Canopy systems

Fassadensysteme

Facade systems



KONSTRUKTIVER GLASBAU

CONSTRUCTIVE GLASS BUILDING

Art.-Nr. P-00-16-10 – Version 03 – 03.2018

Inhalt | Content

Brüstungssysteme Balustrade systems

| | |
|--|-----|
| Ganzglasgeländer Profile Frameless glass balustrade profiles | 06 |
| Punkthalter nach Kategorie B Point fixtures according to *category B | 54 |
| Handläufe und Zubehör Handrails and accessories | 58 |
| Geländerpfosten Balustrade posts | 68 |
| Französische Balkone French balconies | 72 |
| Klemmbefestigungen Clamp fixtures | 164 |
| Befestigungssystem cp-mini Support system cp-mini | 214 |
| Punkthalter Point fixtures | 224 |



Vordach-Systeme Canopy-Systems

| | |
|--|-----|
| Freitragende Vordachsysteme Cantilevered canopy systems | 234 |
| Vordachsysteme mit Zugstangen Canopy systems with connector rods | 256 |
| Vordachsysteme mit Schwertern Canopy systems with swords | 296 |
| Vordachsysteme mit Stütze Canopy systems with posts | 322 |
| Windfänge Windscreens | 328 |
| Einzelteile Single components | 352 |



Fassadensysteme Facade systems

| | |
|--|-----|
| Punkthalter erhaben Point fixtures raised | 392 |
| Punkthalter flächenbündig Point fixtures flush | 396 |
| Spinnen Spider arms | 398 |



| | |
|--|-----|
| Chemisch technische Produkte Chemical-technical products | 402 |
|--|-----|

| | |
|---|-----|
| Service Informationen Service information | 408 |
|---|-----|

*category B = From the DIN 18008

Klemmbefestigungen | Clamp fixtures

| | |
|--|-----|
| Klemmbefestigungen halbrunde Form Clamp fixtures semicircular shape | 166 |
| Klemmbefestigungen eckige Form Clamp fixtures square shape..... | 172 |
| Zubehör Accessories | 200 |
| Informationen Information | 202 |

Klemmbefestigungen

Clamp fixtures





Modell 63 x 45 mm
 Glasdicke | Glass thickness: 8 – 12,76 mm
 Seite | Page 168



Modell 55 x 60 mm
 Glasdicke | Glass thickness: 8 – 12,76 mm
 Seite | Page 172



Modell 52 x 38 mm
 Glasdicke | Glass thickness: 6 – 10,76 mm
 Seite | Page 176



Modell Ø 55 mm
 Glasdicke | Glass thickness: 8 – 12,76 mm
 Seite | Page 180



Klemmbefestigungen

Clamp fixtures



[Halbrunde Form | Semicircle shape]

- *AbZ = German National Technical Approval
- *AbP = German National Technical Certification
- *ETB = Uniform technical building regulations



Klemmbefestigungen

Clamp fixtures

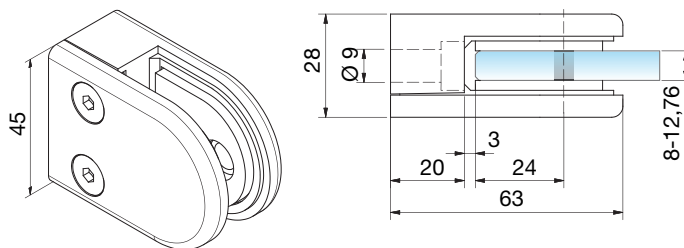
- Halbrunde Form, 63 x 45 mm
- Bis Glasstärke 12,76 mm
- In Zink, A2 und A4
- Bis 2100 mm Glasbreite nachgewiesen
- Umfangreiche Farbpalette

- Semicircular shape, 63 x 45 mm
- Glass thickness up to 12,76 mm
- In zinc, 304 and 316
- Verified for glass widths up to 2100 mm
- Extensive color range



*AbZ = German National Technical Approval
 *AbP = German National Technical Certification
 *ETB = Uniform technical building regulations

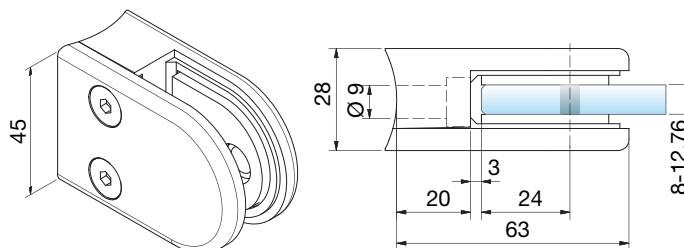
Zink | Zinc die cast (ZN, ZAMAK®)



MADE
IN
GERMANY

| Klemmbefestigung Clamp fixture | | | | | |
|----------------------------------|----------|-------|----------------------|--|---|
| Art.-Nr. Art.no. | | | Sicherheit Safety | | |
| 4808 | 8,76 mm | 8 mm | | | • |
| 4809 | 9,52 mm | | | | • |
| 4810 | 10,76 mm | 10 mm | | | • |
| 4811 | 11,52 mm | | | | • |
| 4812 | 12,76 mm | 12 mm | | | • |

Zink | Zinc die cast (ZN, ZAMAK®)



MADE
IN
GERMANY

Ø 42,4
Ø 60,3

| Klemmbefestigung Clamp fixture | | | | | |
|----------------------------------|----------|-------|----------------------|--|-----------|
| Art.-Nr. Art.no. | | | Sicherheit Safety | | |
| 4842 | 8,76 mm | 8 mm | | | • R20/R30 |
| 4843 | 9,52 mm | | | | • R20/R30 |
| 4852 | 10,76 mm | 10 mm | | | • R20/R30 |
| 4854 | 11,52 mm | | | | • R20/R30 |
| 4853 | 12,76 mm | 12 mm | | | • R20/R30 |

Info

Glasaufbau | Glass composition



Gemäß AbZ/AbP auf www.pauli.de
According to AbZ/AbP on www.pauli.de

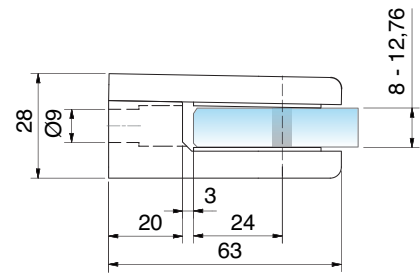
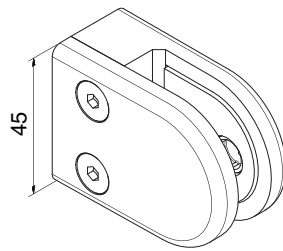
Zubehör | Accessories

9320VA

Oberfläche | Surface



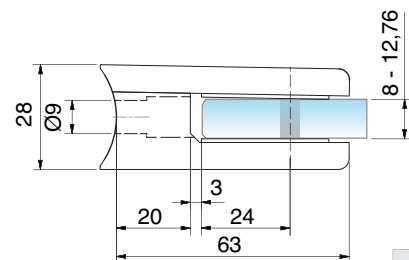
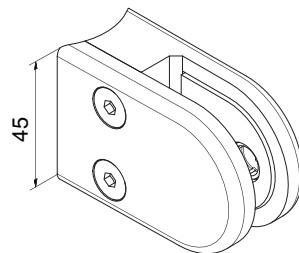
Edelstahl (A4) | Stainless steel (316)



| Klemmbefestigung Clamp fixture | | | | |
|----------------------------------|----------|-------|----------------------|---|
| Art.-Nr. Art.no. | | | Sicherheit Safety | |
| 9302 | 8,76 mm | 8 mm | | • |
| 9300 | 9,52 mm | | | • |
| 9303 | 10,76 mm | 10 mm | | • |
| 9301 | 11,52 mm | | | • |
| 9304 | 12,76 mm | 12 mm | | • |



Edelstahl (A4) | Stainless steel (316)



| Klemmbefestigung Clamp fixture | | | | |
|----------------------------------|----------|-------|----------------------|-------|
| Art.-Nr. Art.no. | | | Sicherheit Safety | |
| 9306 | 8,76 mm | 8 mm | | • R22 |
| 9305 | 9,52 mm | | | • R22 |
| 9307 | 10,76 mm | 10 mm | | • R22 |
| 9309 | 11,52 mm | | | • R22 |
| 9308 | 12,76 mm | 12 mm | | • R22 |

Info

Glasaufbau | Glass composition



Gemäß AbZ/AbP auf www.pauli.de
According to AbZ/AbP on www.pauli.de

Zubehör | Accessories

4820VA

Oberfläche | Surface

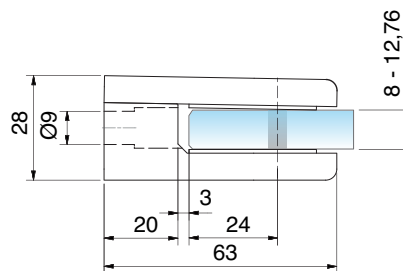
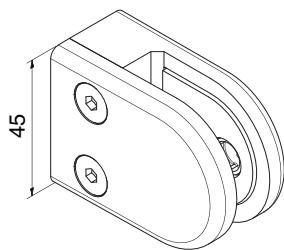


VA1



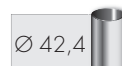
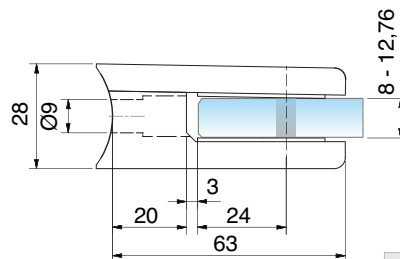
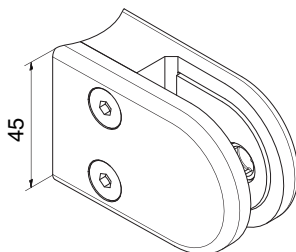
VA2

Edelstahl (A2) | Stainless steel (304)



| Klemmbefestigung Clamp fixture | | | | |
|----------------------------------|----------|-------|----------------------|---|
| Art.-Nr. Art.no. | | | Sicherheit Safety | |
| 9302VA2-A2 | 8,76 mm | 8 mm | | • |
| 9300VA2-A2 | 9,52 mm | | | • |
| 9303VA2-A2 | 10,76 mm | 10 mm | | • |
| 9301VA2-A2 | 11,52 mm | | | • |
| 9304VA2-A2 | 12,76 mm | 12 mm | | • |

Edelstahl (A2) | Stainless steel (304)



| Klemmbefestigung Clamp fixture | | | | |
|----------------------------------|----------|-------|----------------------|-------|
| Art.-Nr. Art.no. | | | Sicherheit Safety | |
| 9306VA2-A2 | 8,76 mm | 8 mm | | • R22 |
| 9305VA2-A2 | 9,52 mm | | | • R22 |
| 9307VA2-A2 | 10,76 mm | 10 mm | | • R22 |
| 9309VA2-A2 | 11,52 mm | | | • R22 |
| 9308VA2-A2 | 12,76 mm | 12 mm | | • R22 |

Info

Glasaufbau | Glass composition



Gemäß AbZ/AbP auf www.pauli.de
According to AbZ/AbP on www.pauli.de

Oberfläche | Surface



VA2

Zubehör | Accessories

4820VA



Klemmbefestigungen

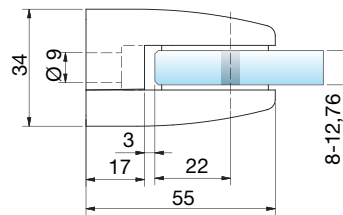
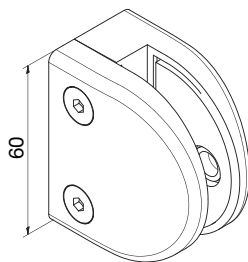
Clamp fixtures

- Halbrunde Form, 55 x 60 mm
 - Bis Glasstärke 12,76 mm
 - In Zink, A2 und A4
 - Bis 2100 mm Glasbreite nachgewiesen
 - Auch zugelassen mit Sicherungsstift
- Semicircular shape, 55 x 60 mm
 - Glass thickness up to 12,76 mm
 - In zinc, 304 and 316
 - Verified glass widths up to 2100 mm
 - Also approved with safety stud



- *AbZ = German National Technical Approval
- *AbP = German National Technical Certification
- *ETB = Uniform technical building regulations

Zink | Zinc die cast (ZN, ZAMAK®)

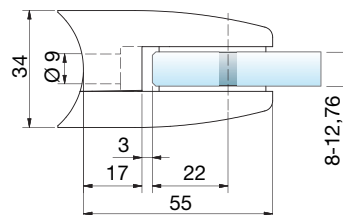
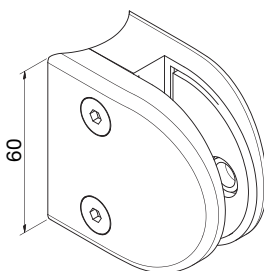


MADE
IN
GERMANY

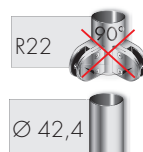
Klemmbefestigung | Clamp fixture

| Art.-Nr. Art.no. | | | Sicherheit Safety | Auch zugelassen mit Also approved with | |
|---------------------|----------|-------|----------------------|---|---|
| 4813 | 8,76 mm | 8 mm | | | • |
| 4821 | 9,52 mm | | | | • |
| 4814 | 10,76 mm | 10 mm | | | • |
| 9013 | 11,52 mm | | | | • |
| 9014 | 12,76 mm | 12 mm | | | • |

Zink | Zinc die cast (ZN, ZAMAK®)



MADE
IN
GERMANY



Klemmbefestigung | Clamp fixture

| Art.-Nr. Art.no. | | | Sicherheit Safety | Auch zugelassen mit Also approved with | |
|---------------------|----------|-------|----------------------|---|-------|
| 4816 | 8,76 mm | 8 mm | | | • R22 |
| 4827 | 9,52 mm | | | | • R22 |
| 4817 | 10,76 mm | 10 mm | | | • R22 |
| 9016 | 11,52 mm | | | | • R22 |
| 9017 | 12,76 mm | 12 mm | | | • R22 |

Info

Glasaufbau | Glass composition



Gemäß AbZ/AbP auf www.pauli.de
According to AbZ/AbP on www.pauli.de

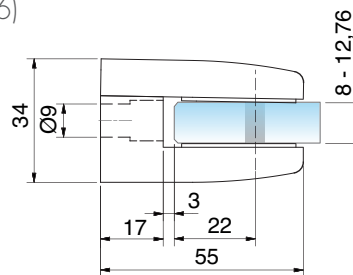
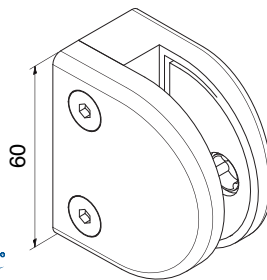
Zubehör | Accessories

9320VA

Oberfläche | Surface



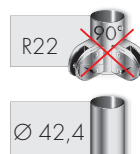
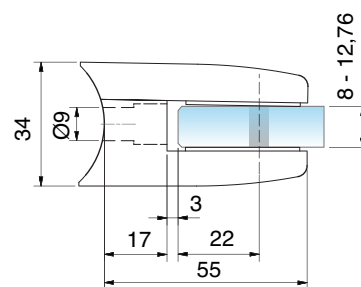
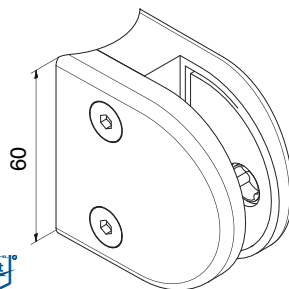
Edelstahl (A4) | Stainless steel (316)



Klemmbefestigung | Clamp fixture

| Art.-Nr. Art.-no. | | | Sicherheit Safety | Auch zugelassen mit Also approved with | |
|----------------------|----------|-------|----------------------|---|---|
| 9322VA2 | 8,76 mm | 8 mm | | | • |
| 9320VA2 | 9,52 mm | | | | • |
| 9323VA2 | 10,76 mm | 10 mm | | | • |
| 9321VA2 | 11,52 mm | | | | • |
| 9324VA2 | 12,76 mm | 12 mm | | | • |

Edelstahl (A4) | Stainless steel (316)



Klemmbefestigung | Clamp fixture

| Art.-Nr. Art.-no. | | | Sicherheit Safety | Auch zugelassen mit Also approved with | |
|----------------------|----------|-------|----------------------|---|-------|
| 9326VA2 | 8,76 mm | 8 mm | | | • R22 |
| 9325VA2 | 9,52 mm | | | | • R22 |
| 9327VA2 | 10,76 mm | 10 mm | | | • R22 |
| 9329VA2 | 11,52 mm | | | | • R22 |
| 9328VA2 | 12,76 mm | 12 mm | | | • R22 |

Info

Glasaufbau | Glass composition



Gemäß AbZ/AbP auf www.pauli.de
According to AbZ/AbP on www.pauli.de

Zubehör | Accessories

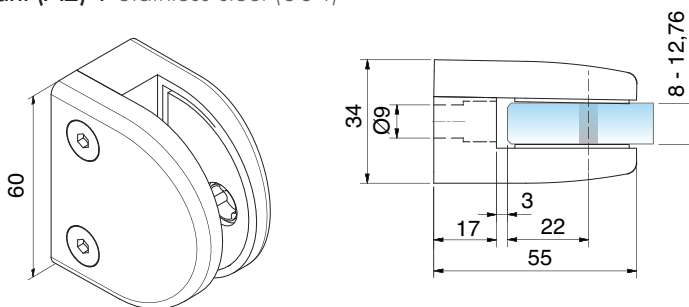
9320VA

Oberfläche | Surface



VA2

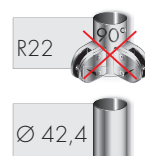
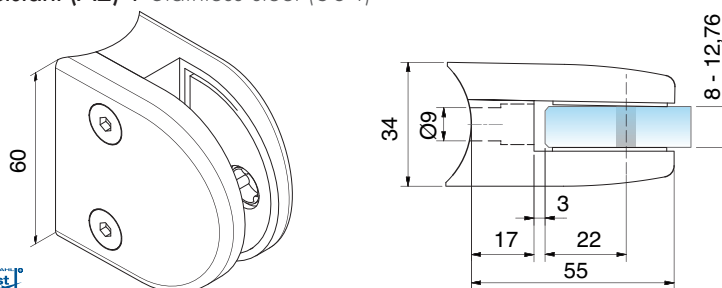
Edelstahl (A2) | Stainless steel (304)



Klemmbefestigung | Clamp fixture

| Art.-Nr. Art.-no. | | | Sicherheit Safety | Auch zugelassen mit Also approved with | |
|----------------------|----------|-------|----------------------|---|---|
| 9322VA2-A2 | 8,76 mm | 8 mm | | | • |
| 9320VA2-A2 | 9,52 mm | | | | • |
| 9323VA2-A2 | 10,76 mm | 10 mm | | | • |
| 9321VA2-A2 | 11,52 mm | | | | • |
| 9324VA2-A2 | 12,76 mm | 12 mm | | | • |

Edelstahl (A2) | Stainless steel (304)



Klemmbefestigung | Clamp fixture

| Art.-Nr. Art.-no. | | | Sicherheit Safety | Auch zugelassen mit Also approved with | |
|----------------------|----------|-------|----------------------|---|-------|
| 9326VA2-A2 | 8,76 mm | 8 mm | | | • R22 |
| 9325VA2-A2 | 9,52 mm | | | | • R22 |
| 9327VA2-A2 | 10,76 mm | 10 mm | | | • R22 |
| 9329VA2-A2 | 11,52 mm | | | | • R22 |
| 9328VA2-A2 | 12,76 mm | 12 mm | | | • R22 |

Info

Glasaufbau | Glass composition



Gemäß AbZ/AbP auf www.pauli.de
According to AbZ/AbP on www.pauli.de

Zubehör | Accessories

9320VA

Oberfläche | Surface



VA2



Klemmbefestigungen

Clamp fixtures

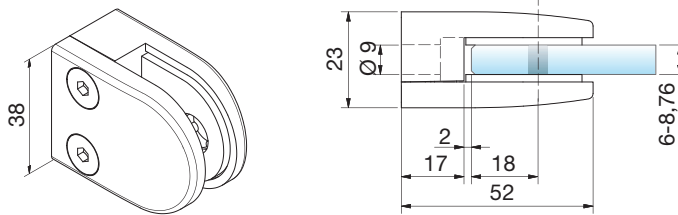
- Halbrunde Form, 52 x 38 mm
- Bis Glasstärke 10,76 mm
- In Zink und A4

- Semicircular shape, 52 x 38 mm
- Glass thickness up to 10,76 mm
- In zinc and 316





Zink | Zinc die cast (ZN, ZAMAK®)



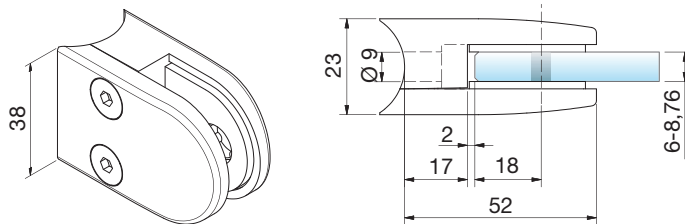
MADE
IN
GERMANY

Klemmbefestigung | Clamp fixture

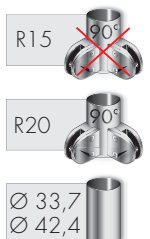
| Art.-Nr. Art.-no. | | | |
|----------------------|---------|------|---|
| 4819 | 6,76 mm | 6 mm | • |
| 4818 | 8,76 mm | 8 mm | • |



Zink | Zinc die cast (ZN, ZAMAK®)



MADE
IN
GERMANY



Klemmbefestigung | Clamp fixture

| Art.-Nr. Art.-no. | | | |
|----------------------|---------|------|-----------|
| 4823 | 6,76 mm | 6 mm | • R15/R20 |
| 4822 | 8,76 mm | 8 mm | • R15/R20 |

Info

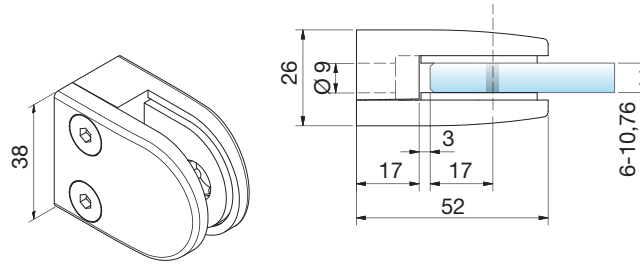
Zubehör | Accessories

4824VA

Oberfläche | Surface



Edelstahl (A4) | Stainless steel (316)

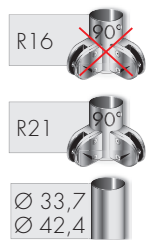
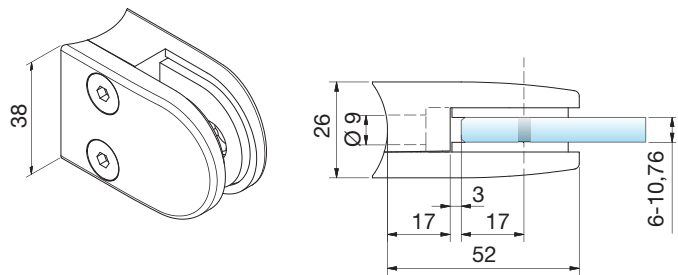


Klemmbefestigung | Clamp fixture

| Art.-Nr. Art. no. | | | |
|----------------------|----------|-------|---|
| 9312 | 6,76 mm | 6 mm | • |
| 9313 | 8,76 mm | 8 mm | • |
| 9314 | 10,76 mm | 10 mm | • |



Edelstahl (A4) | Stainless steel (316)



Klemmbefestigung | Clamp fixture

| Art.-Nr. Art. no. | | | |
|----------------------|----------|-------|-----------|
| 9316 | 6,76 mm | 6 mm | • R16/R21 |
| 9317 | 8,76 mm | 8 mm | • R16/R21 |
| 9318 | 10,76 mm | 10 mm | • R16/R21 |

Info

Zubehör | Accessories

4820VA

Oberfläche | Surface



VA1

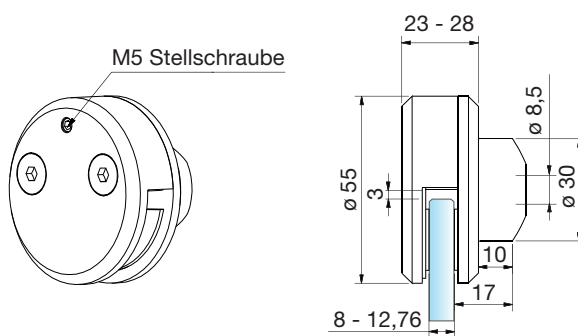


VA2

Radius R21 nur in VA2 lieferbar
Radius R21 only available in VA2






Zink | Zinc die cast (ZN, ZAMAK®)



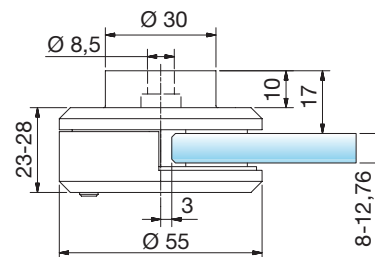
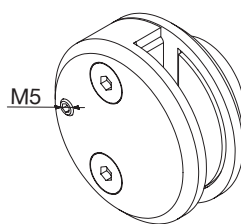
MADE
IN
GERMANY

Ø 42,4

Klemmbefestigung | Clamp fixture

| Art.-Nr. Art. no. |  |  |  |
|----------------------|---|---|---|
| 4861 | 8,76 - 12,76 mm | 8 - 12 mm | • R23 |

Zink | Zinc die cast (ZN, ZAMAK®)



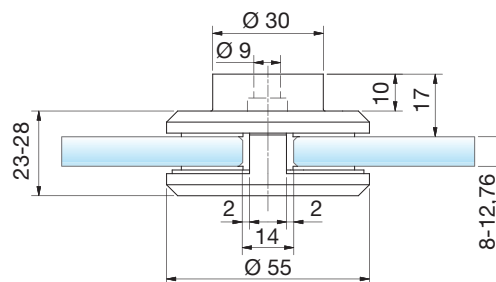
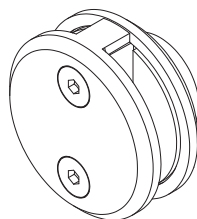
MADE
IN
GERMANY

Klemmbefestigung | Clamp fixture

| | | | |
|---------------------|-----------------|-----------|---|
| Art.-Nr. Art.no. | | | |
| 4860 | 8,76 – 12,76 mm | 8 – 12 mm | • |



Zink | Zinc die cast (ZN, ZAMAK®)



MADE
IN
GERMANY

Klemmbefestigung | Clamp fixture

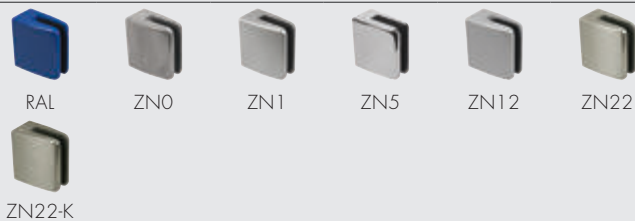
| | | | |
|---------------------|-----------------|-----------|---|
| Art.-Nr. Art.no. | | | |
| 4866 | 8,76 – 12,76 mm | 8 – 12 mm | • |

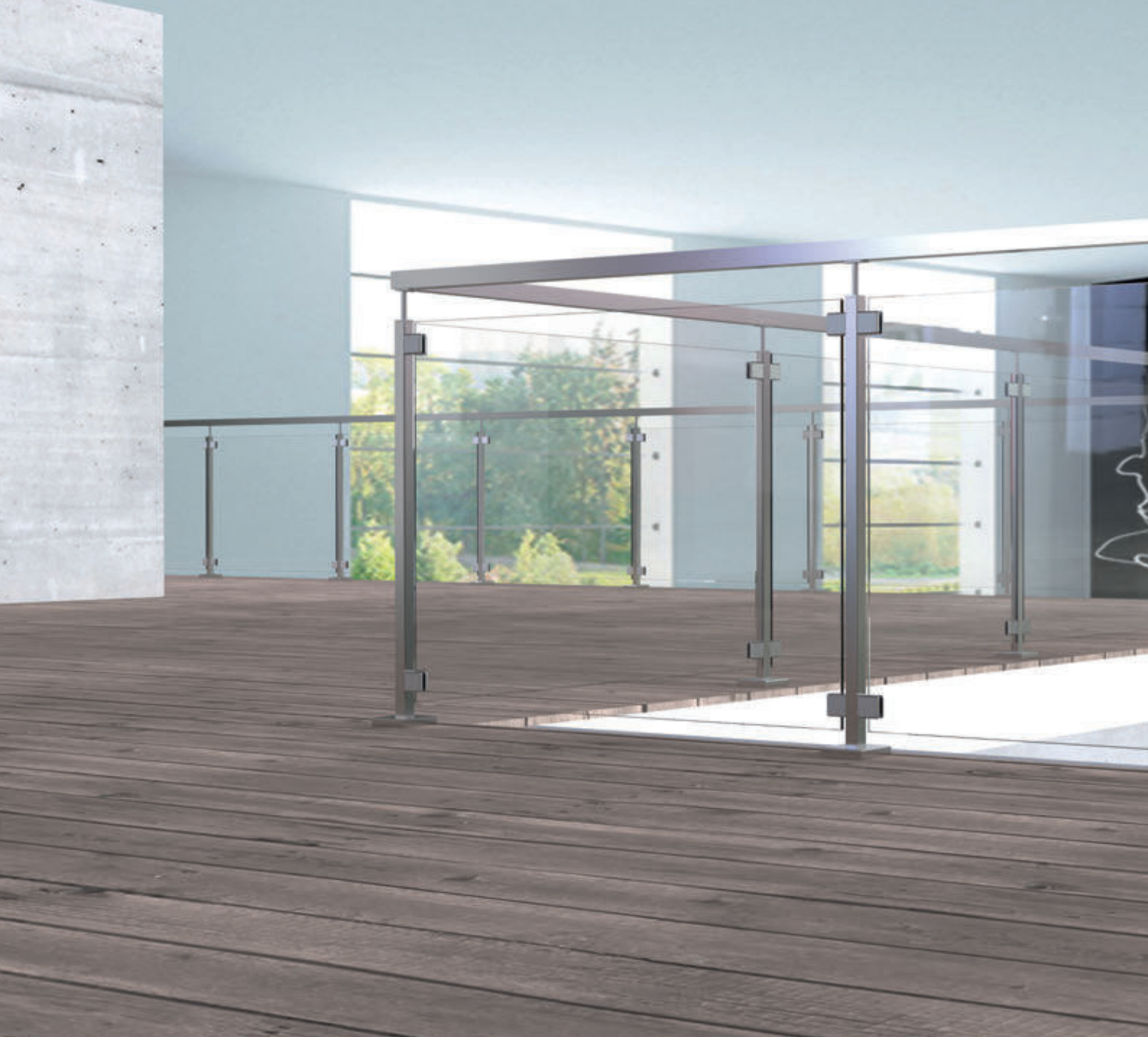
Info

- Ideal für Ecklösungen
- Kein Bedarf an Eckpfosten
- Geschlossene Glasfelder:
ideal für Wind- und Sichtschutz
- Keine Glasbohrung notwendig

- Ideal for corner solutions
- Corner posts not necessary
- Closed glass panels. Ideal for wind and privacy protection
- No glass drilling necessary

Oberfläche | Surface





Modell 48 x 45 mm
 Glasstärke | Glass thickness: 6 – 12,76 mm
 Seite | Page 184



Modell 58 x 45 mm
 Glasstärke | Glass thickness: 8 – 12,76 mm
 Seite | Page 188



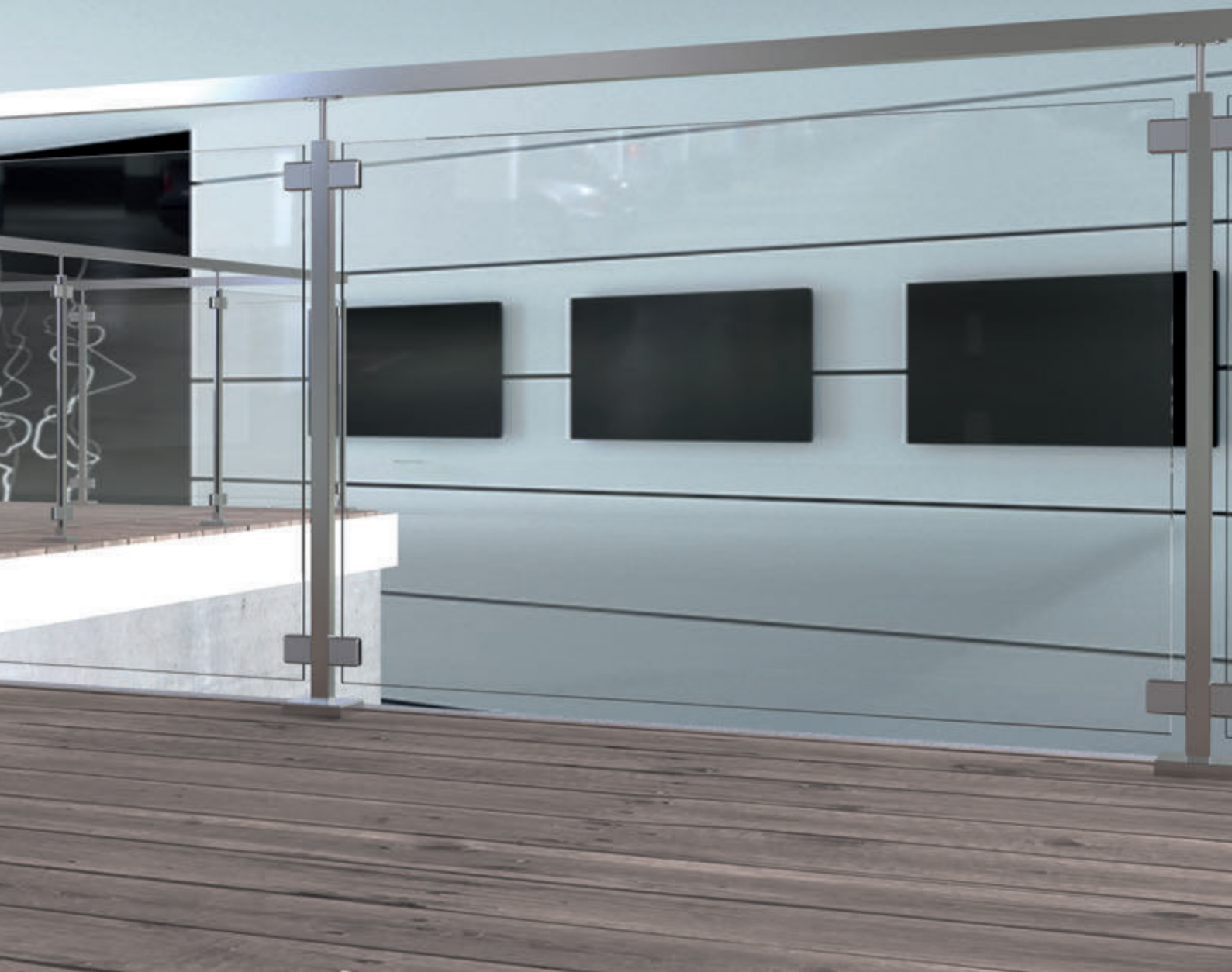
Modell 48 x 45 mm
 Glasstärke | Glass thickness: 6 – 12,76 mm
 Seite | Page 190



Modell 55 x 60 mm
 Glasstärke | Glass thickness: 6 – 12,76 mm
 Seite | Page 192



Modell 55 x 67 mm
 Glasstärke | Glass thickness: 11,52 – 17,52 mm
 Seite | Page 196



Klemmbefestigungen

Clamp fixtures



[Eckige Form | Square shape]

- *AbZ = German National Technical Approval
- *AbP = German National Technical Certification
- *ETB = Uniform technical building regulations



Klemmbefestigungen

Clamp fixtures

- Eckige Form, 48 x 45 mm
- Bis Glasstärke 12,76 mm
- In Zink, A2 und A4
- Auch zugelassen mit Sicherungsplatte
- Umfangreiche Farbpalette

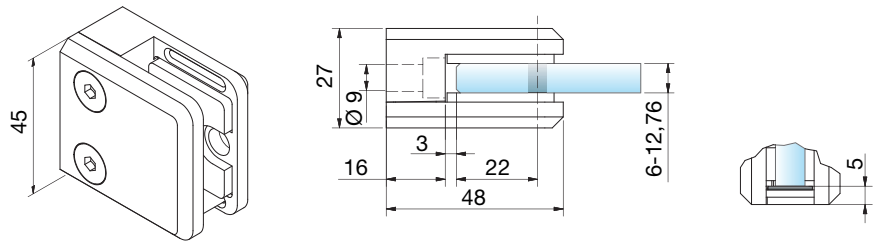
- Square shape, 48 x 45 mm
- Glass thickness up to 12,76 mm
- In zinc, 304 and 316
- Also approved with safety plate
- Extensive color range



*AbZ = German National Technical Approval

*ETB = Uniform technical building regulations

Zink | Zinc die cast (ZN, ZAMAK®)

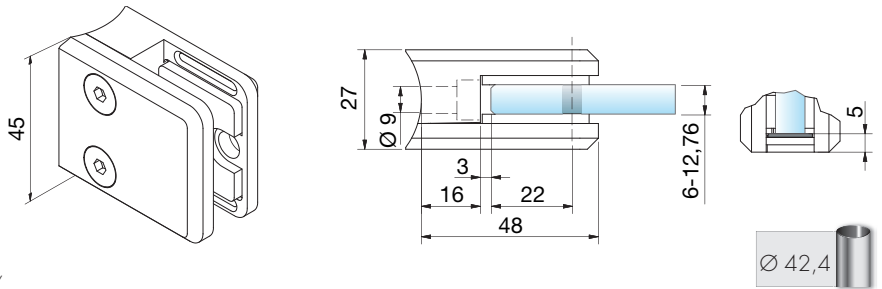


MADE
IN
GERMANY

| Klemmbefestigung Clamp fixture | | | | | |
|----------------------------------|----------|-------|----------------------|---|---|
| Art.-Nr. Art. no. | | | Sicherheit Safety | Auch zugelassen mit Also approved with | |
| 4844 | 6,76 mm | 6 mm | | | • |
| 4845 | 8,76 mm | 8 mm | | | • |
| 4841 | 9,52 mm | | | | • |
| 4846 | 10,76 mm | 10 mm | | | • |
| 9044 | 11,52 mm | | | | • |
| 9045 | 12,76 mm | 12 mm | | | • |



Zink | Zinc die cast (ZN, ZAMAK®)



MADE
IN
GERMANY

| Klemmbefestigung Clamp fixture | | | | | |
|----------------------------------|----------|-------|----------------------|---|-------|
| Art.-Nr. Art. no. | | | Sicherheit Safety | Auch zugelassen mit Also approved with | |
| 4851 | 6,76 mm | 6 mm | | | • R22 |
| 4847 | 8,76 mm | 8 mm | | | • R22 |
| 4859 | 9,52 mm | | | | • R22 |
| 4848 | 10,76 mm | 10 mm | | | • R22 |
| 9047 | 11,52 mm | | | | • R22 |
| 9048 | 12,76 mm | 12 mm | | | • R22 |

Info

Glasaufbau | Glass composition



Gemäß AbZ auf www.pauli.de
According to AbZ on www.pauli.de

Zubehör | Accessories

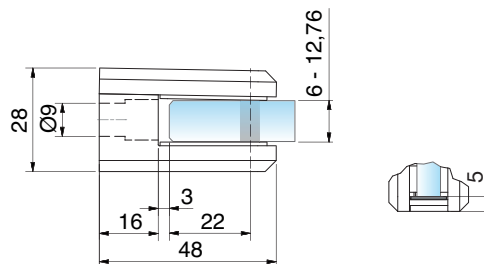
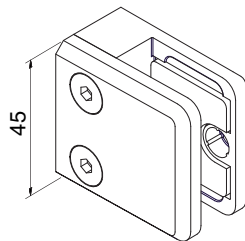
4849VA

9320VA

Oberfläche | Surface



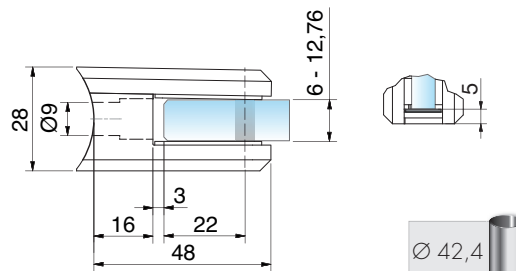
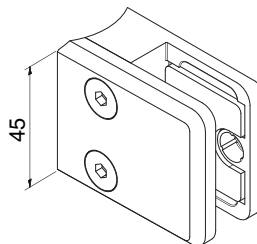
Edelstahl (A4) | Stainless steel (316)



Klemmbefestigung | Clamp fixture

| Art.-Nr. Art.no. | | | Sicherheit Safety | Auch zugelassen mit Also approved with | |
|---------------------|----------|-------|----------------------|---|---|
| 9342 | 6,76 mm | 6 mm | | | • |
| 9343 | 8,76 mm | 8 mm | | | • |
| 9341 | 9,52 mm | | | | • |
| 9344 | 10,76 mm | 10 mm | | | • |
| 9319 | 11,52 mm | | | | • |
| 9340 | 12,76 mm | 12 mm | | | • |

Edelstahl (A4) | Stainless steel (316)



Klemmbefestigung | Clamp fixture

| Art.-Nr. Art.no. | | | Sicherheit Safety | Auch zugelassen mit Also approved with | |
|---------------------|----------|-------|----------------------|---|-------|
| 9346 | 6,76 mm | 6 mm | | | • R22 |
| 9347 | 8,76 mm | 8 mm | | | • R22 |
| 9349 | 9,52 mm | | | | • R22 |
| 9348 | 10,76 mm | 10 mm | | | • R22 |
| 9358 | 11,52 mm | | | | • R22 |
| 9359 | 12,76 mm | 12 mm | | | • R22 |

Info

Glasaufbau | Glass composition



Gemäß AbZ auf www.pauli.de
According to AbZ on www.pauli.de

Oberfläche | Surface

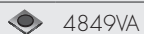


VA1



VA2

Zubehör | Accessories



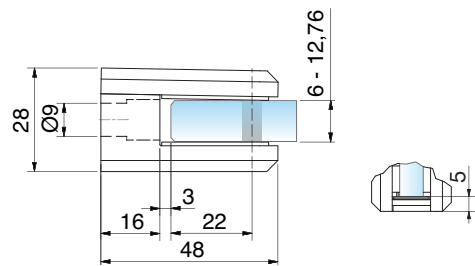
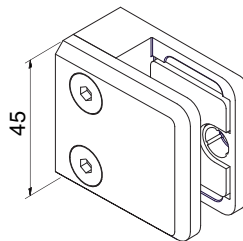
4849VA



9320VA

Klemmbefestigungen | Clamp fixtures

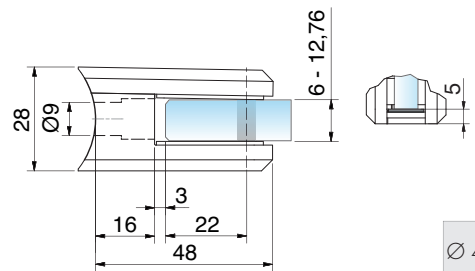
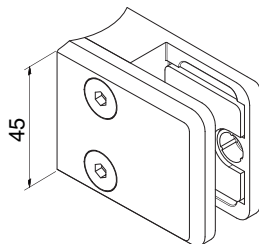
Edelstahl (A2) | Stainless steel (304)



Klemmbefestigung | Clamp fixture

| Art.-Nr. Art.no. | | | Sicherheit Safety | Auch zugelassen mit Also approved with | |
|---------------------|----------|-------|----------------------|---|---|
| 9342VA2-A2 | 6,76 mm | 6 mm | | | • |
| 9343VA2-A2 | 8,76 mm | 8 mm | | | • |
| 9341VA2-A2 | 9,52 mm | | | | • |
| 9344VA2-A2 | 10,76 mm | 10 mm | | | • |
| 9319VA2-A2 | 11,52 mm | | | | • |
| 9340VA2-A2 | 12,76 mm | 12 mm | | | • |

Edelstahl (A2) | Stainless steel (304)



Klemmbefestigung | Clamp fixture

| Art.-Nr. Art.no. | | | Sicherheit Safety | Auch zugelassen mit Also approved with | |
|---------------------|----------|-------|----------------------|---|-------|
| 9346VA2-A2 | 6,76 mm | 6 mm | | | • R22 |
| 9347VA2-A2 | 8,76 mm | 8 mm | | | • R22 |
| 9349VA2-A2 | 9,52 mm | | | | • R22 |
| 9348VA2-A2 | 10,76 mm | 10 mm | | | • R22 |
| 9358VA2-A2 | 11,52 mm | | | | • R22 |
| 9359VA2-A2 | 12,76 mm | 12 mm | | | • R22 |

Info

Glasaufbau | Glass composition



Gemäß AbZ auf www.pauli.de
According to AbZ on www.pauli.de

Oberfläche | Surface

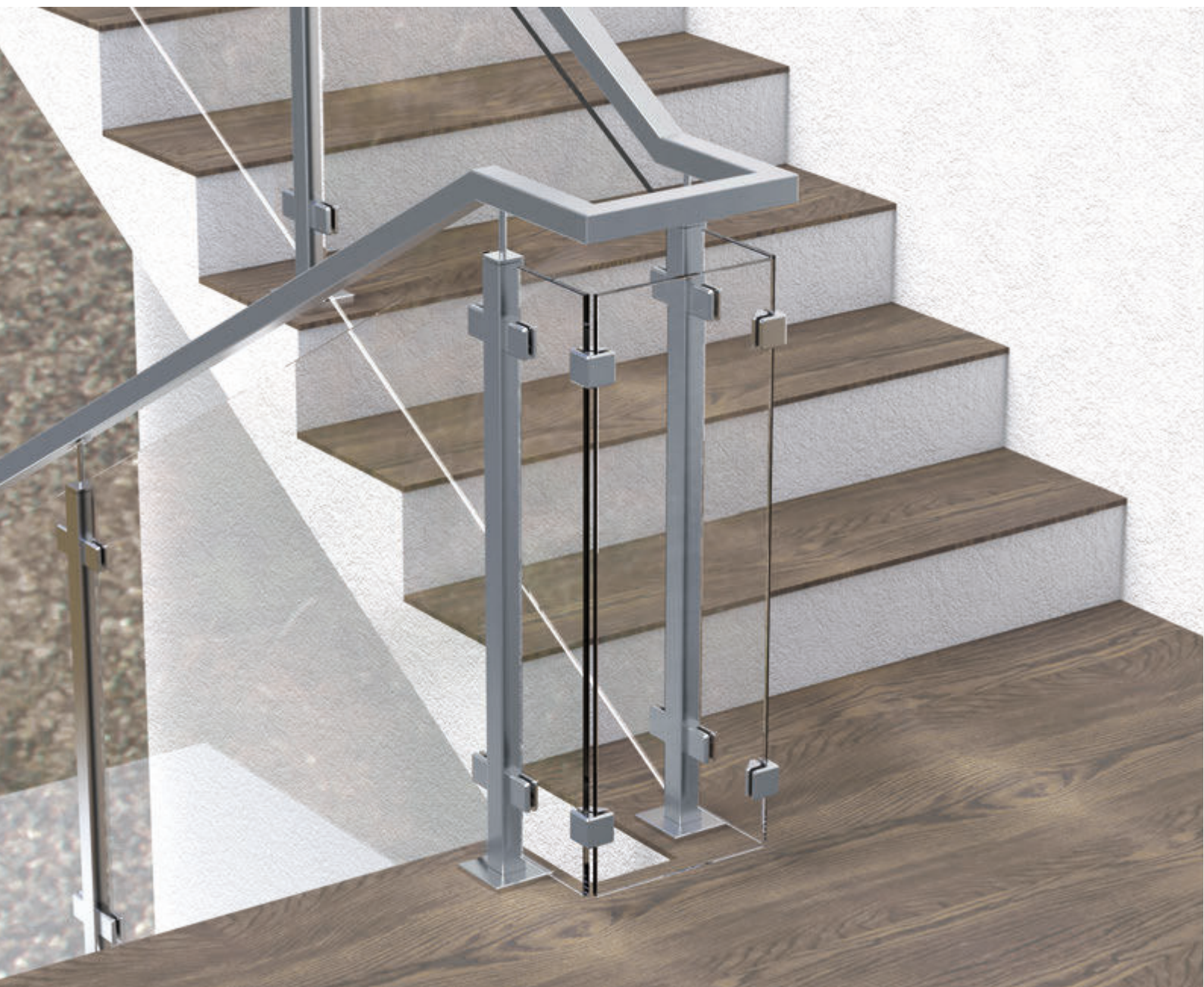


VA2

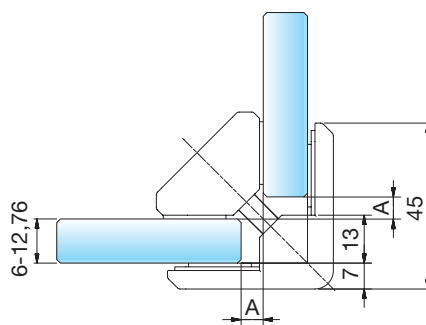
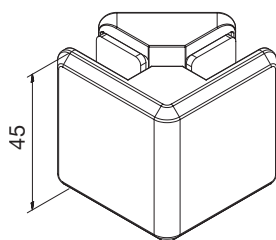
Zubehör | Accessories

4849VA

9320VA



Zink | Zinc die cast (ZN, ZAMAK®)

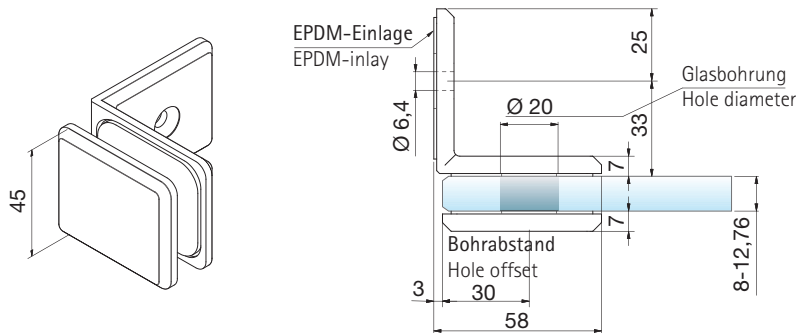


MADE
IN
GERMANY

Eckverbinder | Corner connector

| Art.-Nr. Art.no. | | | A | |
|---------------------|-----------------|-----------|----------|---|
| 4830 | 6,76 – 12,76 mm | 6 – 12 mm | 5/6/8 mm | • |

Zink | Zinc die cast (ZN, ZAMAK®)



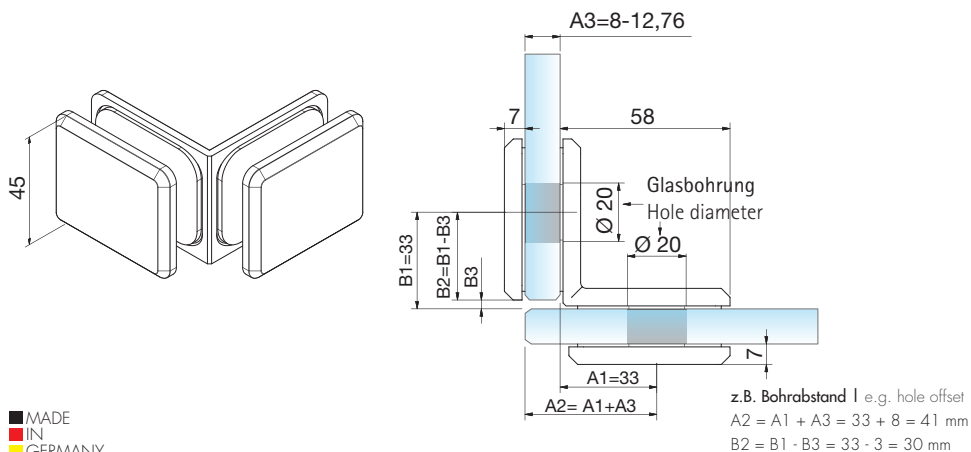
MADE
IN
GERMANY

Klemmbefestigung/Glas-Wand | Clamp fixture/ glass-wall

| | | | |
|---------------------|-----------------|-----------|---|
| Art.-Nr. Art.no. | | | |
| 4875 | 8,76 - 12,76 mm | 8 - 12 mm | • |



Zink | Zinc die cast (ZN, ZAMAK®)



MADE
IN
GERMANY

Klemmbefestigung/ Eckverbinder | Clamp fixture/ corner connector

| | | |
|---------------------|-----------------|-----------|
| Art.-Nr. Art.no. | | |
| 4874 | 8,76 - 12,76 mm | 8 - 12 mm |

Info

| Glasaufbau Glass composition | Abzugsmaß [A] Reduction dimension |
|--------------------------------|--------------------------------------|
| 9,52 - 12,76 mm | 5 mm |
| 8,00 - 8,76 mm | 6 mm |
| 6,00 - 6,76 mm | 8 mm |

| Oberfläche Surface | | | | | |
|----------------------|--------|-----|-----|------|------|
| | | | | | |
| RAL | ZnO | Zn1 | Zn5 | Zn12 | Zn22 |
| | Zn22-K | | | | |



Klemmbefestigungen

Clamp fixtures

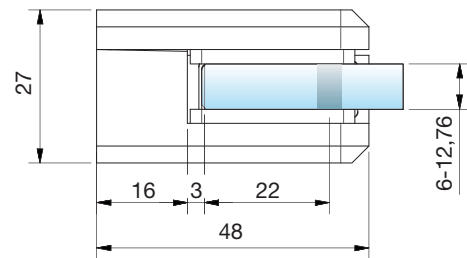
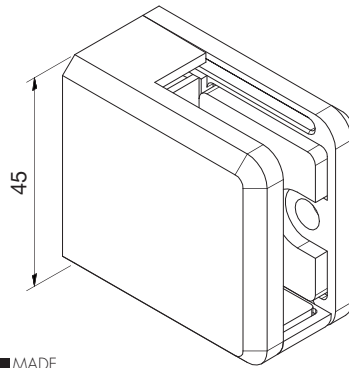
- Eckige Form, 48 x 45 mm
- Bis Glasstärke 12,76 mm
- Auch zugelassen mit Sicherungsplatte und -stift
- Vereinfachte Montage

- Square shape, 48 x 45 mm
- Glass thickness up to 12,76 mm
- Also approved with safety plate and stud
- Simplified installation

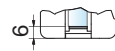


*AbZ = German National Technical Approval

Zink | Zinc die cast (ZN, ZAMAK®)

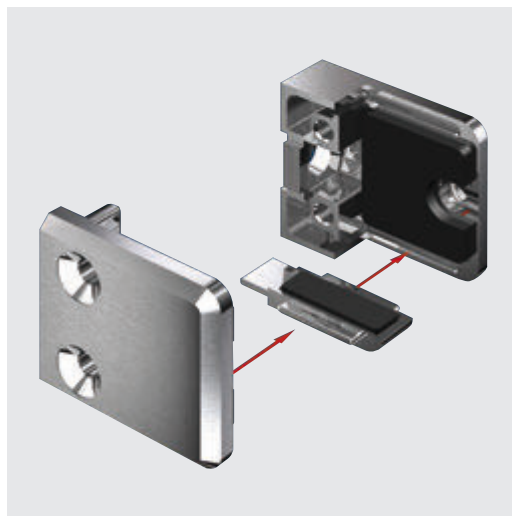
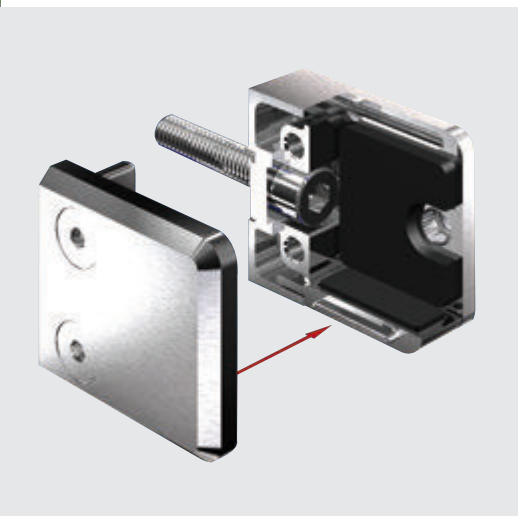


MADE
IN
GERMANY



Klemmbefestigung | Clamp fixture

| Art.-Nr. Art.no. |  |  | Sicherheit Safety | Auch zugelassen mit Also approved with |  |
|---------------------|---|---|--|---|---|
| 9070 | 6,76 mm | 6 mm | | | • |
| 9071 | 8,76 mm | 8 mm |  |  | • |
| 9072 | 9,52 mm | |  |  | • |
| 9073 | 10,76 mm | 10 mm |  |  | • |
| 9074 | 11,52 mm | |  |  | • |
| 9075 | 12,76 mm | 12 mm |  |  | • |




Info


Glasaufbau | Glass composition



Gemäß AbZ auf www.pauli.de
According to AbZ on www.pauli.de

Zubehör | Accessories

 9320VA

 inklusive | included

Oberfläche | Surface



RAL



ZnO



ZN12



ZN22-K

Vereinfachte Montage | Simplified installation

Das Glas kann während der Verbauung auf der Sicherheitsplatte abgestellt werden.
During installation the glass can be placed on the safety plate.



Klemmbefestigungen

Clamp fixtures

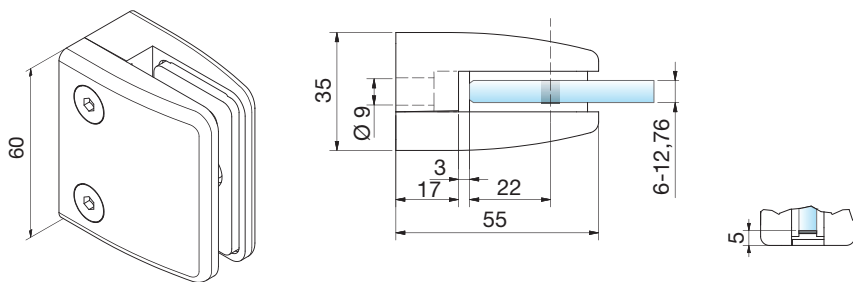
- Eckige Form, 55 x 60 mm
- Bis Glasstärke 12,76 mm
- In Zink, A2 und A4
- Bis 2100 mm Glasbreite nachgewiesen
- Auch zugelassen mit Sicherungsplatte



- *AbZ = German National Technical Approval
- *AbP = German National Technical Certification
- *ETB = Uniform technical building regulations

- Square shape, 55 x 60 mm
- Glass thickness up to 12,76 mm
- In zinc, 304 and 316
- Verified glass width up to 2100 mm
- Also approved with safety plate

Zink | Zinc die cast (ZN, ZAMAK®)

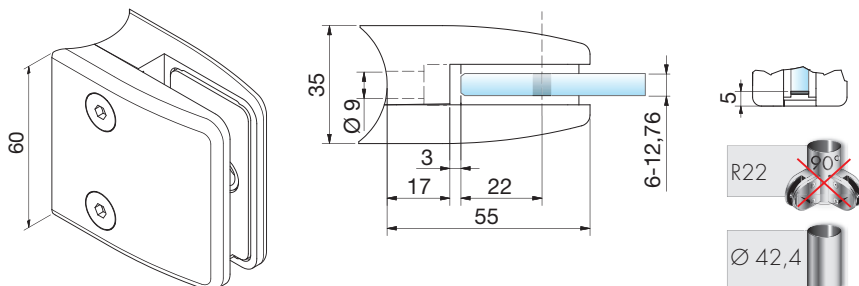


MADE
IN
GERMANY

| Klemmbefestigung Clamp fixture | | | | | |
|----------------------------------|----------|-------|----------------------|---|---|
| Art.-Nr. Art.-no. | | | Sicherheit Safety | Auch zugelassen mit Also approved with | |
| 9001 | 6,76 mm | 6 mm | | | • |
| 4804 | 8,76 mm | 8 mm | | | • |
| 9002 | 9,52 mm | | | | • |
| 4805 | 10,76 mm | 10 mm | | | • |
| 9003 | 11,52 mm | | | | • |
| 9004 | 12,76 mm | 12 mm | | | • |



Zink | Zinc die cast (ZN, ZAMAK®)



MADE
IN
GERMANY

| Klemmbefestigung Clamp fixture | | | | | |
|----------------------------------|----------|-------|----------------------|---|-------|
| Art.-Nr. Art.-no. | | | Sicherheit Safety | Auch zugelassen mit Also approved with | |
| 9005 | 6,76 mm | 6 mm | | | • R22 |
| 4806 | 8,76 mm | 8 mm | | | • R22 |
| 9006 | 9,52 mm | | | | • R22 |
| 4807 | 10,76 mm | 10 mm | | | • R22 |
| 9008 | 11,52 mm | | | | • R22 |
| 9007 | 12,76 mm | 12 mm | | | • R22 |

Info

Glasaufbau | Glass composition



Gemäß AbZ/AbP auf www.pauli.de
According to AbZ/AbP on www.pauli.de

Zubehör | Accessories

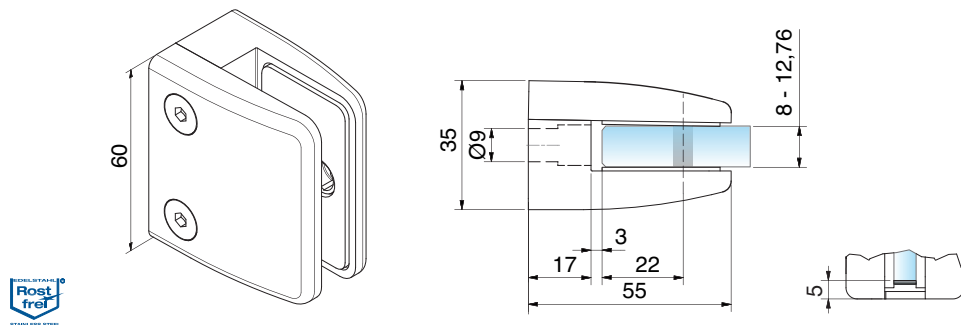
4849VA

4820VA

Oberfläche | Surface

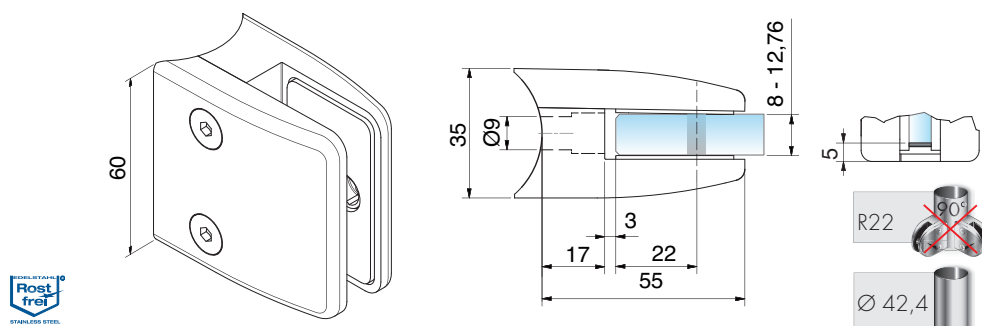


Edelstahl (A4) | Stainless steel (316)



| Klemmbefestigung Clamp fixture | | | | | |
|----------------------------------|----------|-------|----------------------|---|---|
| Art.-Nr. Art.-no. | | | Sicherheit Safety | Auch zugelassen mit Also approved with | |
| 9332 | 8,76 mm | 8 mm | | | • |
| 9330 | 9,52 mm | | | | • |
| 9333 | 10,76 mm | 10 mm | | | • |
| 9331 | 11,52 mm | | | | • |
| 9334 | 12,76 mm | 12 mm | | | • |

Edelstahl (A4) | Stainless steel (316)



| Klemmbefestigung Clamp fixture | | | | | |
|----------------------------------|----------|-------|----------------------|---|-------|
| Art.-Nr. Art.-no. | | | Sicherheit Safety | Auch zugelassen mit Also approved with | |
| 9336 | 8,76 mm | 8 mm | | | • R22 |
| 9335 | 9,52 mm | | | | • R22 |
| 9337 | 10,76 mm | 10 mm | | | • R22 |
| 9339 | 11,52 mm | | | | • R22 |
| 9338 | 12,76 mm | 12 mm | | | • R22 |

Info

Glasaufbau | Glass composition



Gemäß AbZ/AbP auf www.pauli.de
According to AbZ/AbP on www.pauli.de

Oberfläche | Surface



VA1



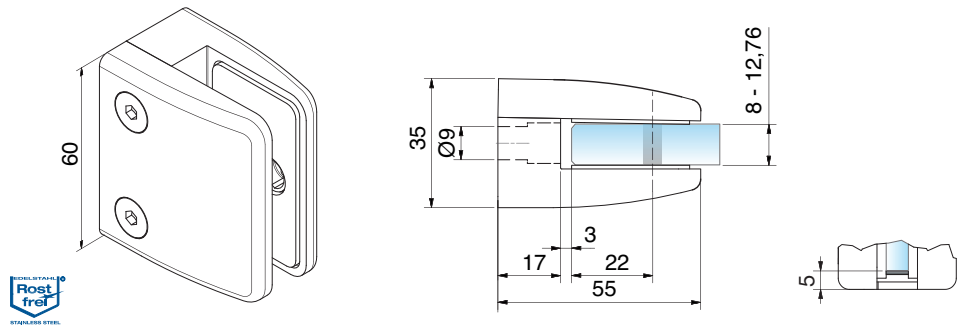
VA2

Zubehör | Accessories

4899VA

9320VA

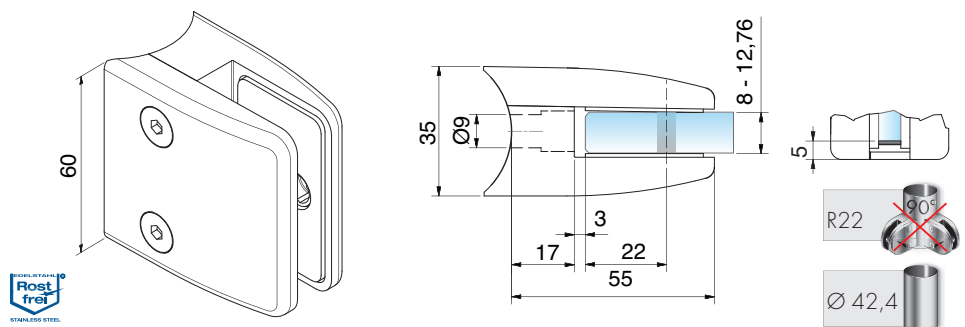
Edelstahl (A2) | Stainless steel (304)



Klemmbefestigung | Clamp fixture

| Art.-Nr. Art.-no. | | | Sicherheit Safety | Auch zugelassen mit Also approved with | |
|----------------------|----------|-------|----------------------|---|---|
| 9332VA2-A2 | 8,76 mm | 8 mm | | | • |
| 9330VA2-A2 | 9,52 mm | | | | • |
| 9333VA2-A2 | 10,76 mm | 10 mm | | | • |
| 9331VA2-A2 | 11,52 mm | | | | • |
| 9334VA2-A2 | 12,76 mm | 12 mm | | | • |

Edelstahl (A2) | Stainless steel (304)



Klemmbefestigung | Clamp fixture

| Art.-Nr. Art.-no. | | | Sicherheit Safety | Auch zugelassen mit Also approved with | |
|----------------------|----------|-------|----------------------|---|-------|
| 9336VA2-A2 | 8,76 mm | 8 mm | | | • R22 |
| 9335VA2-A2 | 9,52 mm | | | | • R22 |
| 9337VA2-A2 | 10,76 mm | 10 mm | | | • R22 |
| 9339VA2-A2 | 11,52 mm | | | | • R22 |
| 9338VA2-A2 | 12,76 mm | 12 mm | | | • R22 |

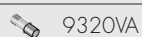
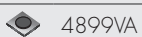
Info

Glasaufbau | Glass composition



Gemäß AbZ/AbP auf www.pauli.de
According to AbZ/AbP on www.pauli.de

Zubehör | Accessories



Oberfläche | Surface



VA2



Klemmbefestigungen

Clamp fixtures

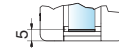
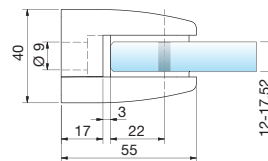
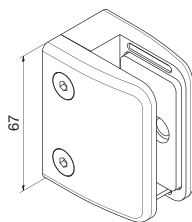
- Eckige Form, 55 x 67 mm
- Bis Glasstärke 17,52 mm
- In Zink und A4
- Bis 2100 mm Glasbreite nachgewiesen
- Auch zugelassen mit Sicherungsplatte



- *AbZ German National Technical Approval
- *AbP German National Technical Certification
- *ETB Uniform technical building regulations

- Square shape, 55 x 67 mm
- Glass thickness up to 17,52 mm
- In zinc and 316
- Verified glass widths up to 2100 mm
- Also approved with safety plate

Zink | Zinc die cast (ZN, ZAMAK®)

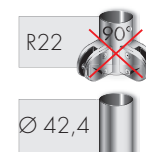
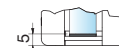
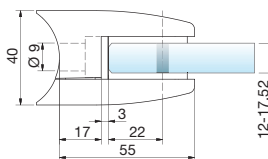
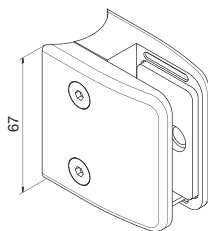


MADE
IN
GERMANY

Klemmbefestigung | Clamp fixture

| Art.-Nr. Art.no. | | | Sicherheit Safety | Auch zugelassen mit Also approved with | |
|---------------------|----------|-------|----------------------|---|---|
| 9081 | 11,52 mm | | | | • |
| 4891 | 12,76 mm | 12 mm | | | • |
| 4890 | 13,52 mm | | | | • |
| 4892 | | 14 mm | | | • |
| 9082 | | 15 mm | | | • |
| 4893 | 16,76 mm | | | | • |
| 9083 | 17,52 mm | | | | • |

Zink | Zinc die cast (ZN, ZAMAK®)



MADE
IN
GERMANY

Klemmbefestigung | Clamp fixture

| Art.-Nr. Art.no. | | | Sicherheit Safety | Auch zugelassen mit Also approved with | |
|---------------------|----------|-------|----------------------|---|-------|
| 9084 | 11,52 mm | | | | • R22 |
| 4894 | 12,76 mm | 12 mm | | | • R22 |
| 4897 | 13,52 mm | | | | • R22 |
| 4895 | | 14 mm | | | • R22 |
| 9086 | | 15 mm | | | • R22 |
| 4896 | 16,76 mm | | | | • R22 |
| 9087 | 17,52 mm | | | | • R22 |

Info

Glasaufbau | Glass composition



Gemäß AbZ/AbP auf www.pauli.de
According to AbZ/AbP on www.pauli.de

Oberfläche | Surface



RAL



ZnO

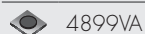


Zn22



Zn22-K

Zubehör | Accessories

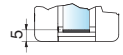
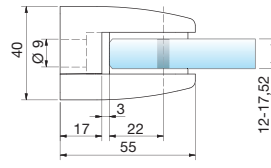
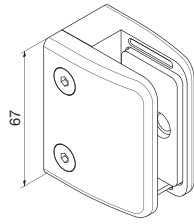


4899VA



4898VA

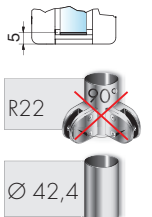
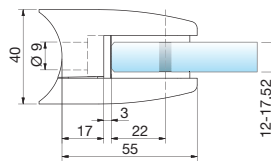
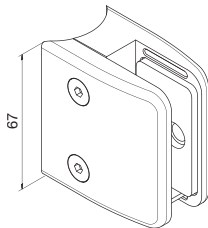
Edelstahl (A4) | Stainless steel (316)



Klemmbefestigung | Clamp fixture

| Art.-Nr. Art. no. | | | Sicherheit Safety | Auch zugelassen mit Also approved with | |
|----------------------|----------|-------|----------------------|---|---|
| 9460 | 11,52 mm | | | | • |
| 9461 | 12,76 mm | 12 mm | | | • |
| 9462 | 13,52 mm | | | | • |
| 9463 | | 15 mm | | | • |
| 9464 | 16,76 mm | | | | • |
| 9465 | 17,52 mm | | | | • |

Edelstahl (A4) | Stainless steel (316)



Klemmbefestigung | Clamp fixture

| Art.-Nr. Art. no. | | | Sicherheit Safety | Auch zugelassen mit Also approved with | |
|----------------------|----------|-------|----------------------|---|-------|
| 9470 | 11,52 mm | | | | • R22 |
| 9471 | 12,76 mm | 12 mm | | | • R22 |
| 9472 | 13,52 mm | | | | • R22 |
| 9473 | | 15 mm | | | • R22 |
| 9474 | 16,76 mm | | | | • R22 |
| 9475 | 17,52 mm | | | | • R22 |

Info

Glasaufbau | Glass composition



Gemäß AbZ/AbP auf www.pauli.de
According to AbZ/AbP on www.pauli.de

Oberfläche | Surface



VA1



VA2

Zubehör | Accessories

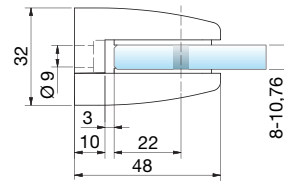
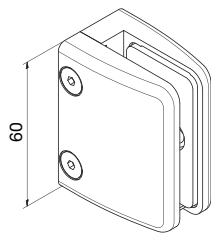


4899VA



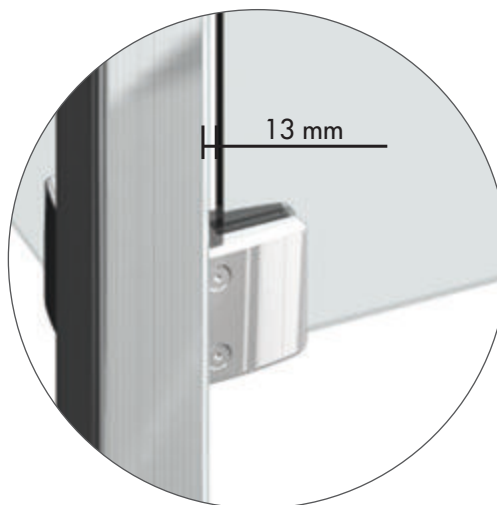
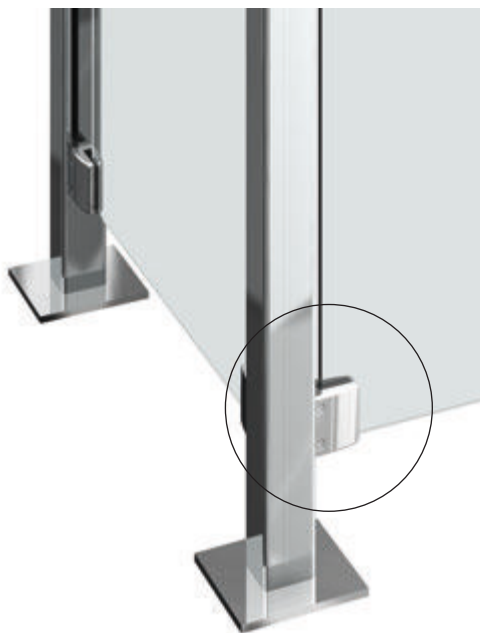
4898VA

Zink | Zinc die cast (ZN, ZAMAK®)



MADE
IN
GERMANY

| Klemmbefestigung Clamp fixture | | | | | |
|----------------------------------|----------|-------|----------------------|---|---|
| Art.-Nr. Art.no. | | | Sicherheit Safety | Auch zugelassen mit Also approved with | |
| 4801 | 8,76 mm | 8 mm | | | • |
| 4800 | 9,52 mm | | | | • |
| 4802 | 10,76 mm | 10 mm | | | • |



Geringer Glasabstand | Small glass clearance

Info

Glasaufbau | Glass composition



Gemäß AbZ auf www.pauli.de
According to AbZ on www.pauli.de

Zubehör | Accessories

4849VA

4820VA

Oberfläche | Surface



RAL



ZN0



ZN5



ZN12



ZN22

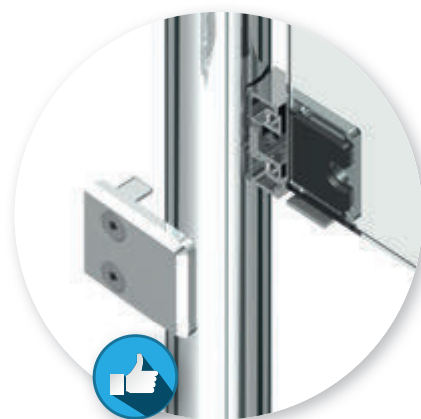
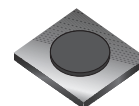


ZN22-K

Info - Abrutschsicherung durch Sicherungsplatte | Safety plate slip protection

Der Einsatz der Sicherungsplatte gewährleistet die bei vorgesetzten Montagen vorgeschriebene mechanische Sicherung gegen das Abrutschen der Scheibe.

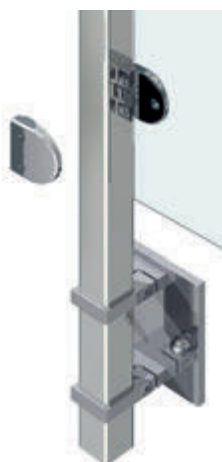
The use of the safety plate provides the prescribed level of mechanical protection needed to ensure that the fasciamounted glass panel does not slip.



Info - Abrutschsicherung durch Sicherungsstift | Safety stud slip protection

Der Einsatz des Sicherungsstiftes gewährleistet die bei vorgesetzten Montagen vorgeschriebene mechanische Sicherung gegen das Abrutschen der Scheibe.

The use of the safety stud provides the prescribed level of mechanical protection needed to ensure that the clamped glass panel does not slip.



Edelstahl | Stainless steel



Sicherungsplatte | Safety plate

| Art.-Nr. Art.no. | Info | Inklusive Included |
|---------------------|----------------|-----------------------|
| 4849VA | 18 x 20 x 2 mm | 4887KU3 |
| 4899VA | 24 x 22 x 2 mm | 4887KU3 |

Edelstahl | Stainless steel



Sicherungsstift | Safety stud

| Art.-Nr. Art.no. | Info | Glasbohrung \geq Glasdicke Glass hole \geq Glass thickness |
|---------------------|-------------------------|---|
| 4826VA | \varnothing 4 x 12 mm | min. \varnothing 10 mm |
| 4824VA | \varnothing 4 x 16 mm | min. \varnothing 10 mm |
| 4828VA | \varnothing 4 x 25 mm | min. \varnothing 10 mm |
| 4820VA | \varnothing 6 x 16 mm | min. \varnothing 10 mm |
| 4898VA | \varnothing 6 x 25 mm | min. \varnothing 10 mm |
| 9320VA | \varnothing 6 x 20 mm | min. \varnothing 10 mm |

Info

Pflegeinfo | Cleaning instructions



80000500
S. | P. 401

Befestigungszubehör für Klemmbefestigung
Fixation accessories for clamp fixture



Z096

S. | P. 230



Z097

S. | P. 230

Montagehinweis | Assembly notice

Sicherungsstift mit dem Hammer in das Klemmenoberteil einschlagen
Use a hammer to drive the safety stud into the upper part of the clamp



Sicherheit Klemmbefestigungen Safety with clamp fixtures

Projekte sicher planen | plan projects safely

mit Allgemeiner bauaufsichtlicher Zulassung | with National Technical Approval

SPAREN SIE ZEIT UND GELD !

- Fachmännische Beratung und praxisnahe Schulungen
- Einfache Glasdimensionierung mit Hilfe der AbZ

SAVE TIME AND MONEY!

- Expert advice and practical training courses
- Simple glass dimensioning with the aid of the *AbZ

*AbZ = German National Technical Approval

Nachweis der Klemmen und Füllung Clamp infill verification

Klemmen nach AbZ Z-70.2-28 mit Glasfüllung

Clamps according to *AbZ Z-70.2-28 with glass infills

Dieser Auszug aus der AbZ zeigt Ihnen die Abmessungen der Geländerfüllungen für Klemmen ohne Sicherungsstift oder -platte.

These two pages show (excerpt from the national technical approval) the dimensions of the balustrade infills for clamps without safety studs and without safety plates.



Vorgehensweise | Procedure:

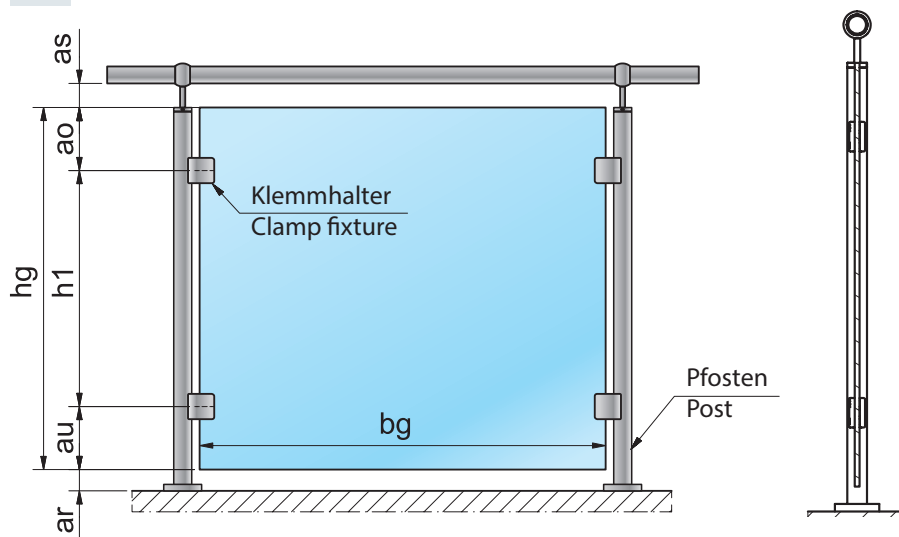


= I + II



= I + II + III

I



| | min. | max. |
|----|------|-----------|
| bg | 500 | 1500 |
| ao | 150 | 250 |
| h1 | 500 | 700 |
| au | 150 | 250 |
| hg | 800 | 1000 |
| as | 10 | 50*/120** |
| ar | 10 | 50*/120** |

*Ohne Kantenschutz | **Mit Kantenschutz
*Without edge protection | **With edge protection

Alle Klemmen mit der Verwendung nach AbZ ohne Sicherungsstift oder Sicherungsplatte

All clamps according to the *AbZ without safety studs or safety plates

| Art.-Nr. Art.-no. | | | | | Art.-Nr. Art.-no. | | | | | Art.-Nr. Art.-no. | | | | | | | |
|---------------------|------|------|------|------|---------------------|--|------|------|------|---------------------|------|--|------|------|------|------|------|
| | 4800 | 4801 | 4802 | 9003 | 9004 | | 4808 | 4809 | 4810 | 4811 | 4812 | | 9330 | 9331 | 9332 | 9333 | 9334 |
| | 9007 | 9008 | | | | | 4842 | 4843 | 4852 | 4853 | 4854 | | 9335 | 9336 | 9337 | 9338 | 9339 |
| | 4804 | 4805 | 4806 | 4807 | 9002 | | 4813 | 4814 | 4816 | 4817 | 4821 | | 4890 | 4891 | 4893 | 4894 | 4896 |
| | 9006 | | | | | | 4827 | 9013 | 9014 | 9016 | 9017 | | 4897 | 9082 | 9083 | 9086 | 9087 |
| | 4841 | 4845 | 4846 | 4847 | 4848 | | 9320 | 9321 | 9322 | 9323 | 9324 | | | | | | |
| | 4859 | 9044 | 9045 | 9047 | 9048 | | 9325 | 9326 | 9327 | 9328 | 9329 | | | | | | |
| | 9341 | 9343 | 9344 | 9347 | 9348 | | 9460 | 9461 | 9462 | 9463 | 9464 | | 9071 | 9072 | 9073 | 9074 | 9075 |
| | 9349 | 9319 | 9340 | 9347 | 9358 | | 9465 | 9470 | 9471 | 9472 | 9473 | | | | | | |
| | 9359 | | | | | | 9474 | 9475 | | | | | | | | | |

*AbZ = German National Technical Approval

Nachweis der Klemmen und Füllung

Clamp infill verification

Glasaufbau für den Innenbereich (für Klemmen ohne Sicherungsstift oder -platte)
Clamps without safety studs and without safety plates for indoor use

II

| Glasaufbau Glass structure | Gesamtdicke Total thickness | | Einzelglasdicke Single glass thickness | | | | | | | | |
|-------------------------------|--------------------------------|-------|---|---|-------|----|-------|----|----|-------|--|
| | min. | max. | 2 x 4 | 8 | 2 x 5 | 10 | 2 x 6 | 12 | 15 | 2 x 8 | |
| VSG = 2 x SPG | 9,52 | 11,52 | ■ | | ■ | | | | | | |
| VSG = 2 x TVG | 9,52 | 11,52 | ■ | | ■ | | | | | | |
| VSG = 2 x ESG | 8,76 | 17,52 | ■ | | ■ | | ■ | ■ | | ■ | |
| ESGH | 8 | 15 | | ■ | | ■ | | ■ | ■ | ■ | |

Glasdickenbestimmung
Defining the glass thickness



III

Glasaufbau für den Außenbereich mit Windlast (für Klemmen ohne Sicherungsstift oder -platte) | Glass composition for outdoor use with wind load (for clamps without safety studs or safety plates)

Mögliche Einzelglasdicken für die Anwendungen im Außenbereich, (siehe Innenbereich für Dicke der PVB-Folie).
Abhängig von Windlast und Scheibenbreite (bg) (grüne Felder sind möglich)
Possible glass thickness for outdoor applications, depending on the wind load and glass width (bg) (green fields are possible)

| Windlast Windload | SPG 2 x 5 | SPG 2 x 6 | ESG 2 x 4 | ESG 2 x 5 | ESG 2 x 6 | ESG 2 x 8 | ESG-H 8 | ESG-H 10 | ESG-H 12 | ESG-H 15 | TVG 2 x 5 | TVG 2 x 6 | kN/m ² | bg |
|----------------------|--------------|--------------|--------------|--------------|--------------|--------------|------------|-------------|-------------|-------------|--------------|--------------|-------------------|------|
| | | | | | | | | | | | | | | |
| 2,20 | | | | ■ | ■ | ■ | ■ | ■ | ■ | ■ | | | | 500 |
| 1,65 | | ■ | ■ | ■ | ■ | ■ | ■ | ■ | ■ | ■ | | | | 500 |
| 1,60 | | ■ | ■ | ■ | ■ | ■ | ■ | ■ | ■ | ■ | | | | 500 |
| 1,20 | | ■ | ■ | ■ | ■ | ■ | ■ | ■ | ■ | ■ | | | | 500 |
| 1,00 | ■ | ■ | ■ | ■ | ■ | ■ | ■ | ■ | ■ | ■ | | | | 500 |
| 0,75 | ■ | ■ | ■ | ■ | ■ | ■ | ■ | ■ | ■ | ■ | | | | 500 |
| 2,20 | | | | ■ | ■ | ■ | ■ | ■ | ■ | ■ | | | | 750 |
| 1,65 | | | | ■ | ■ | ■ | ■ | ■ | ■ | ■ | | | | 750 |
| 1,60 | | | | ■ | ■ | ■ | ■ | ■ | ■ | ■ | | | | 750 |
| 1,20 | | | | ■ | ■ | ■ | ■ | ■ | ■ | ■ | | | | 750 |
| 1,00 | | ■ | ■ | ■ | ■ | ■ | ■ | ■ | ■ | ■ | | | | 750 |
| 0,75 | | ■ | ■ | ■ | ■ | ■ | ■ | ■ | ■ | ■ | | | | 750 |
| 2,20 | | | | ■ | ■ | ■ | ■ | ■ | ■ | ■ | | | | 1000 |
| 1,65 | | | | ■ | ■ | ■ | ■ | ■ | ■ | ■ | | | | 1000 |
| 1,60 | | | | ■ | ■ | ■ | ■ | ■ | ■ | ■ | | | | 1000 |
| 1,20 | | | | ■ | ■ | ■ | ■ | ■ | ■ | ■ | | | | 1000 |
| 1,00 | | ■ | ■ | ■ | ■ | ■ | ■ | ■ | ■ | ■ | | | | 1000 |
| 0,75 | | ■ | ■ | ■ | ■ | ■ | ■ | ■ | ■ | ■ | | | | 1000 |
| 2,20 | | | | ■ | ■ | ■ | ■ | ■ | ■ | ■ | | | | 1250 |
| 1,65 | | | | ■ | ■ | ■ | ■ | ■ | ■ | ■ | | | | 1250 |
| 1,60 | | | | ■ | ■ | ■ | ■ | ■ | ■ | ■ | | | | 1250 |
| 1,20 | | | | ■ | ■ | ■ | ■ | ■ | ■ | ■ | | | | 1250 |
| 1,00 | | | | ■ | ■ | ■ | ■ | ■ | ■ | ■ | | | | 1250 |
| 0,75 | | | | ■ | ■ | ■ | ■ | ■ | ■ | ■ | | | | 1250 |
| 2,20 | | | | ■ | ■ | ■ | ■ | ■ | ■ | ■ | | | | 1500 |
| 1,65 | | | | ■ | ■ | ■ | ■ | ■ | ■ | ■ | | | | 1500 |
| 1,60 | | | | ■ | ■ | ■ | ■ | ■ | ■ | ■ | | | | 1500 |
| 1,20 | | | | ■ | ■ | ■ | ■ | ■ | ■ | ■ | | | | 1500 |
| 1,00 | | | | ■ | ■ | ■ | ■ | ■ | ■ | ■ | | | | 1500 |
| 0,75 | | | | ■ | ■ | ■ | ■ | ■ | ■ | ■ | | | | 1500 |

Glasdickenbestimmung
Defining the glass thickness



Alle Angaben in mm
All dimensions in mm

Nachweis der Klemmen und Füllung Clamp infill verification

Klemmen nach AbZ Z-70.2-28 mit Glasfüllung

Clamps according to *AbZ Z-70.2-28 with glass infills

Dieser Auszug aus der AbZ zeigt Ihnen die Abmessungen der Geländerfüllungen für die Klemmen mit Sicherungsstift.

These two pages show the dimensions of the railing infills for clamps with safety studs.



Vorgehensweise | Procedure:

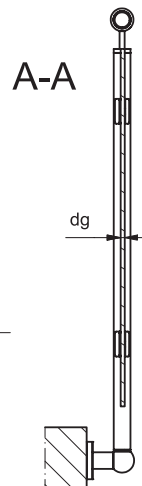
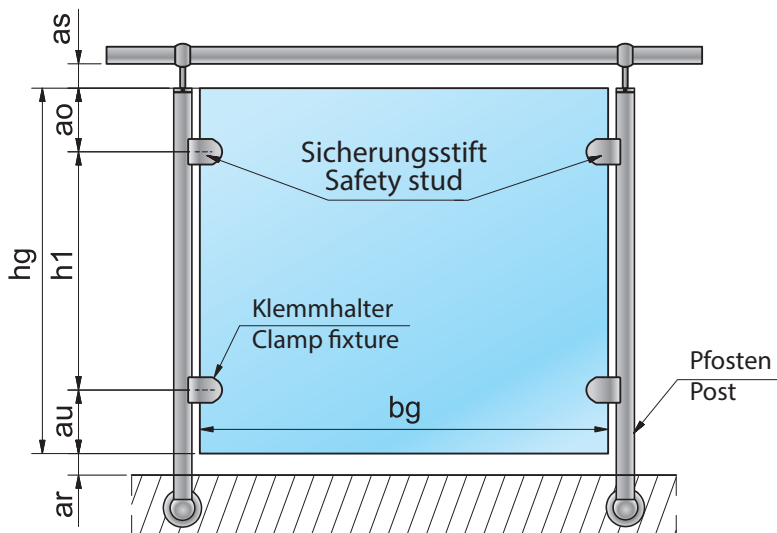


= I + II



= I + II + III

I



| | min. | max. |
|----|------|-----------|
| bg | 500 | 1500 |
| ao | 150 | 250 |
| h1 | 500 | 700 |
| au | 150 | 250 |
| hg | 800 | 1000 |
| as | 10 | 50*/120** |
| ar | 10 | 50*/120** |

*Ohne Kantenschutz | **Mit Kantenschutz
*Without edge protection | **With edge protection

Alle Klemmen mit der Verwendung nach AbZ mit Sicherungsstift All clamps according to the *AbZ with safety studs

Sicherungsstift bei oberen oder unteren Klemmbefestigungen möglich | Safety stud is possible with upper or lower clamp fixtures

Art.-Nr. | Art.-no.

4821 4827 9013 9014 9016 9017

Art.-Nr. | Art.-no.

9071 9072 9073 9074 9075



9320 9321 9324 9325 9328 9329



Wir empfehlen zwei Bohrungen, wobei die Lage der Bohrungen entsprechend der Klemme variieren kann. .
This means four holes are required in the glass, the location of the hole depends on the clamps used.

*AbZ = German National Technical Approval

Nachweis der Klemmen und Füllung

Clamp infill verification

Glasaufbau für den Innen- und Außenbereich (für Klemmen mit Sicherungsstift)
Clamps for indoor use (without safety studs and without safety plates)

II

| Glasaufbau Glass structure | Gesamtdicke Total thickness | | Einzelglasdicke Single glass thickness | | | | | |
|-------------------------------|--------------------------------|-------|---|---|-------|----|-------|----|
| | min. | max. | 2 x 4 | 8 | 2 x 5 | 10 | 2 x 6 | 12 |
| VSG = 2 x SPG | 9,52 | 11,52 | | | | | | |
| VSG = 2 x TVG | 9,52 | 11,52 | | | | | | |
| VSG = 2 x ESG | 8,76 | 16,76 | | | | | | |
| ESG-H | 8 | 15 | | | | | | |

Glasdickenbestimmung
Defining the glass thickness



III

Glasaufbau für den Außenbereich mit Windlast (für Klemmen mit Sicherungsstift)
Glass composition for outdoor use with wind load (for clamps with safety studs)

Mögliche Einzelglasdicken für die Anwendungen im Außenbereich, (siehe Innenbereich für Dicke der PVB-Folie).
Abhängig von Windlast und Scheibenbreite (bg) (grüne Felder sind möglich)
Possible glass thickness for outdoor applications, depending on the wind load and glass width (bg) (green fields are possible)

| Windlast Windload | ESG 2 x 4 | ESG 2 x 5 | ESG 2 x 6 | ESG-H 8 | ESG-H 10 | ESG-H 12 |
|----------------------|--------------|--------------|--------------|------------|-------------|-------------|
| | | | | | | |
| 2,20 | | | | | | |
| 1,65 | | | | | | |
| 1,60 | | | | | | |
| 1,20 | | | | | | |
| 1,00 | | | | | | |
| 0,75 | | | | | | |
| 2,20 | | | | | | |
| 1,65 | | | | | | |
| 1,60 | | | | | | |
| 1,20 | | | | | | |
| 1,00 | | | | | | |
| 0,75 | | | | | | |
| 2,20 | | | | | | |
| 1,65 | | | | | | |
| 1,60 | | | | | | |
| 1,20 | | | | | | |
| 1,00 | | | | | | |
| 0,75 | | | | | | |
| 2,20 | | | | | | |
| 1,65 | | | | | | |
| 1,60 | | | | | | |
| 1,20 | | | | | | |
| 1,00 | | | | | | |
| 0,75 | | | | | | |
| 2,20 | | | | | | |
| 1,65 | | | | | | |
| 1,60 | | | | | | |
| 1,20 | | | | | | |
| 1,00 | | | | | | |
| 0,75 | | | | | | |

Glasdickenbestimmung
Defining the glass thickness



Alle Angaben in mm
All dimensions in mm

Nachweis der Klemmen und Füllung Clamp infill verification

Klemmen nach AbZ Z-70.2-28 mit Glasfüllung

Clamps according to *AbZ Z-70.2-28 with glass infills

Dieser Auszug aus der AbZ zeigt Ihnen die Abmessungen der Geländerfüllungen für die Klemmen mit Sicherungsplatte.

These two pages show the dimensions of the balustrade infills for clamps with safety plates.



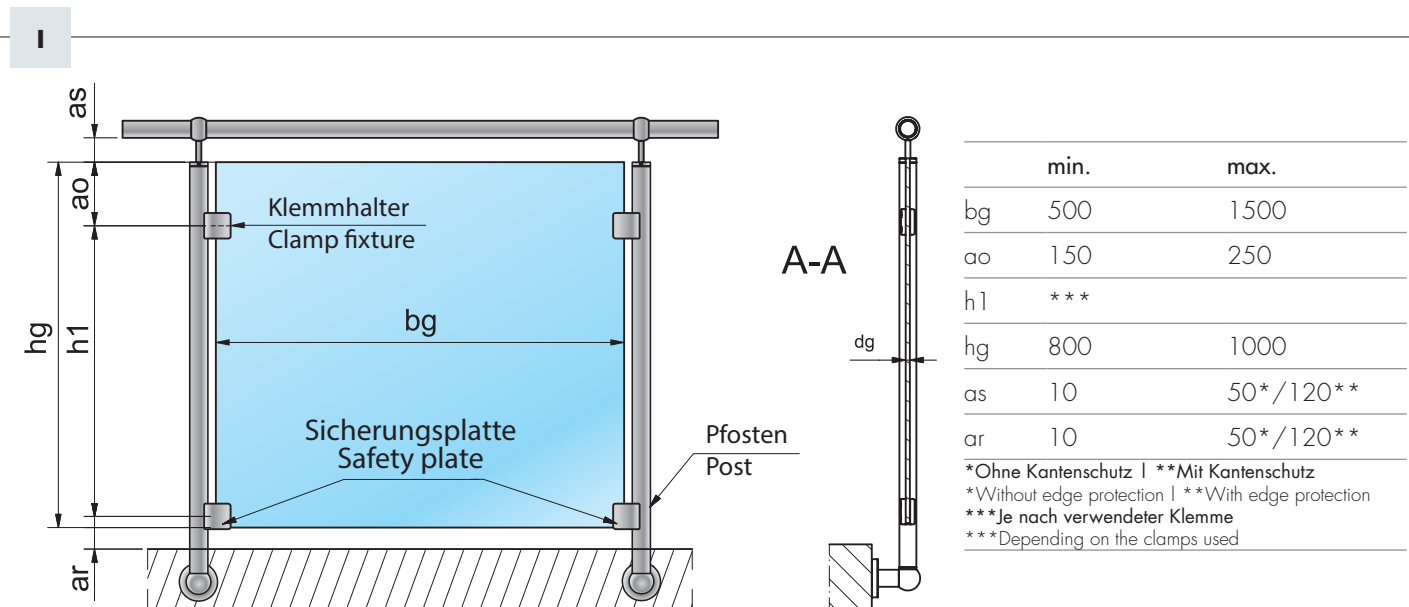
Vorgehensweise | Procedure:



= I + II



= I + II + III



Alle Klemmen mit der Verwendung nach AbZ mit Sicherungsplatte

All clamps according to the *AbZ with safety plates

| Art.-Nr. Art.-no. | | | | | Art.-Nr. Art.-no. | | | | | Art.-Nr. Art.-no. | | | | |
|---------------------|------|------|------|------|---------------------|------|------|------|------|---------------------|------|--|------|------|
| | 4800 | 4801 | 4802 | | | 4890 | 4891 | 4893 | 4894 | 4896 | | | | |
| | | | | | | 4897 | 9081 | 9082 | 9083 | 9084 | | | | |
| | | | | | | 9086 | 9087 | | | | | | | |
| | 4804 | 4805 | 4806 | 4807 | 9002 | | 9330 | 9331 | 9332 | 9333 | 9334 | | | |
| | 9006 | | | | | | 9335 | 9336 | 9337 | 9338 | 9339 | | | |
| | 4841 | 4845 | 4846 | 4847 | 4848 | | 9460 | 9461 | 9462 | 9463 | 9464 | | 9071 | 9072 |
| | 4859 | 9044 | 9045 | 9047 | 9048 | | 9465 | 9470 | 9471 | 9472 | 9473 | | 9073 | 9074 |
| | 9341 | 9343 | 9344 | 9347 | 9348 | | 9474 | 9475 | | | | | 9075 | |
| | 9349 | 9319 | 9340 | 9347 | 9358 | | | | | | | | | |
| | 9359 | | | | | | | | | | | | | |

*AbZ = German National Technical Approval

Nachweis der Klemmen und Füllung

Clamp infill verification

Glasaufbau für den Innenbereich (für Klemmen mit Sicherheitsplatte)

Glass composition for indoor use (for clamps with safety plates)

II

| Glasaufbau Glass structure | Gesamtdicke Total thickness | | Einzelglasdicke Single glass thickness | | | | | | | | |
|-------------------------------|--------------------------------|-------|---|---|-------|----|-------|----|----|-------|---|
| | min. | max. | 2 x 4 | 8 | 2 x 5 | 10 | 2 x 6 | 12 | 15 | 2 x 8 | |
| VSG = 2 x ESG | 8,76 | 17,52 | ■ | | ■ | | ■ | | | | ■ |
| ESGH | 8 | 15 | | ■ | | ■ | | ■ | ■ | | |

Glasdickenbestimmung
Defining the glass thickness



III

Glasaufbau für den Außenbereich mit Windlast (für Klemmen mit Sicherheitsplatte)

Glass composition for outdoor use with wind load (for clamps with safety plates)

Mögliche Einzelglasdicken für die Anwendungen im Außenbereich, (siehe Innenbereich für Dicke der PVB-Folie).
Abhängig von Windlast und Scheibenbreite (bg) (grüne Felder sind möglich)

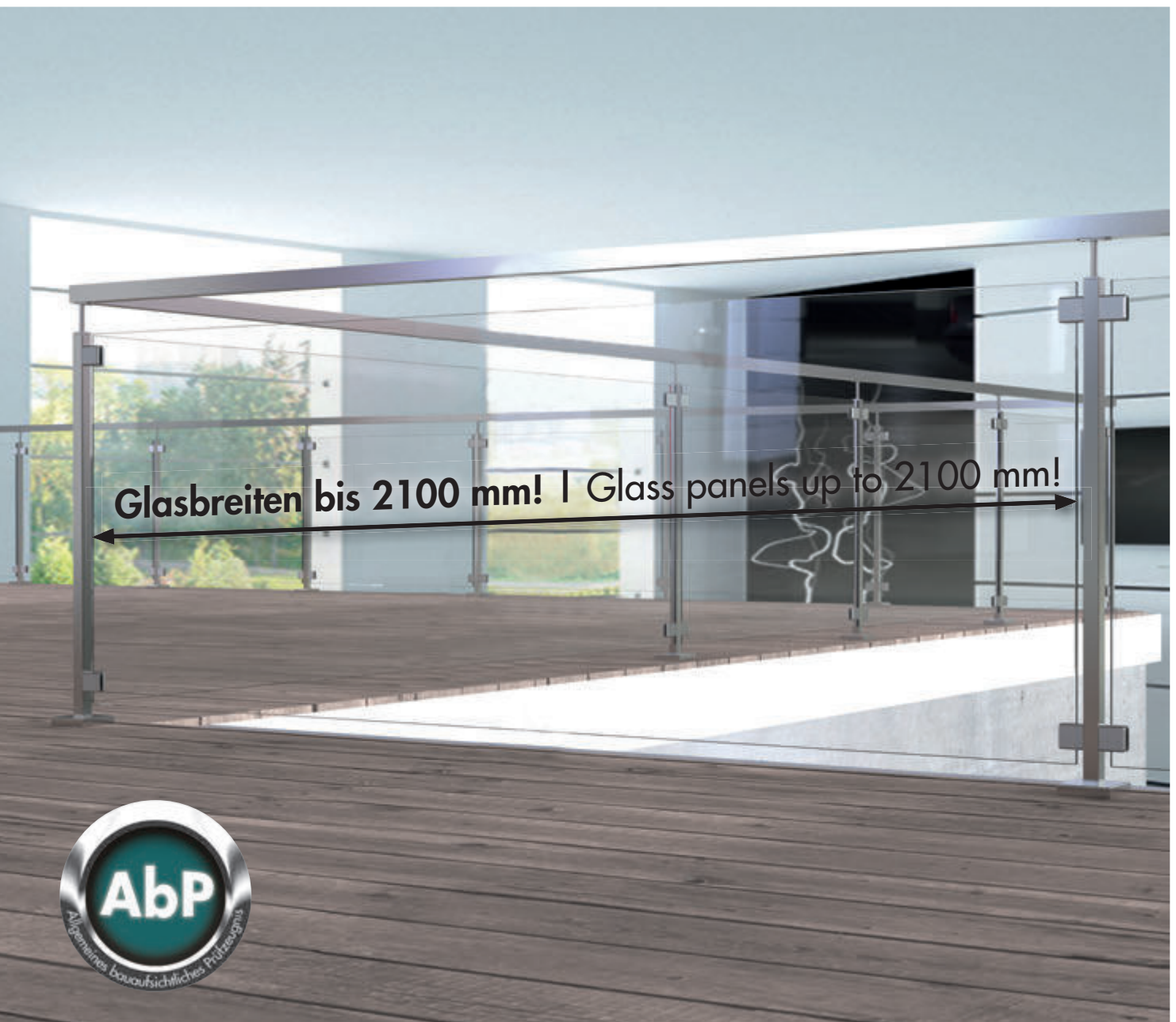
Possible glass thickness for outdoor applications, depending on the wind load and glass width (bg) (green fields are possible)

| Windlast Windload | ESG 2 x 4 | ESG 2 x 5 | ESG 2 x 6 | ESG 2 x 8 | ESGH 8 | ESGH 10 | ESGH 12 | ESGH 15 | kN/m ² | bg | | | | | | | | | | | | | | | | | | | | | | | | | | | | | | | | | | | | | | | | |
|--|--------------|--------------|--------------|--------------|-----------|------------|------------|------------|-------------------|-----|--------------|--------------|--------------|-----------|------------|------------|------------|---|---|-----|---|---|---|---|---|---|---|---|---|------|---|---|---|---|---|---|---|---|---|------|---|---|---|---|---|---|---|---|---|------|
| | | | | | | | | | | | ESG 2 x 5 | ESG 2 x 6 | ESG 2 x 8 | ESGH 8 | ESGH 10 | ESGH 12 | ESGH 15 | | | | | | | | | | | | | | | | | | | | | | | | | | | | | | | | | |
| 2,20 1,65 1,60 1,20 1,00 0,75 | ■ | ■ | ■ | ■ | ■ | ■ | ■ | ■ | ■ | 500 | | | | | | | | | | | | | | | | | | | | | | | | | | | | | | | | | | | | | | | | |
| | | | | | | | | | | | ■ | ■ | ■ | ■ | ■ | ■ | ■ | ■ | ■ | 750 | | | | | | | | | | | | | | | | | | | | | | | | | | | | | | |
| | | | | | | | | | | | | | | | | | | | | | ■ | ■ | ■ | ■ | ■ | ■ | ■ | ■ | ■ | 1000 | | | | | | | | | | | | | | | | | | | | |
| | | | | | | | | | | | | | | | | | | | | | | | | | | | | | | | ■ | ■ | ■ | ■ | ■ | ■ | ■ | ■ | ■ | 1250 | | | | | | | | | | |
| | | | | | | | | | | | | | | | | | | | | | | | | | | | | | | | | | | | | | | | | | ■ | ■ | ■ | ■ | ■ | ■ | ■ | ■ | ■ | 1500 |
| | | | | | | | | | | | | | | | | | | | | | | | | | | | | | | | | | | | | | | | | | | | | | | | | | | |

Glasdickenbestimmung
Defining the glass thickness



Alle Angaben in mm
All dimensions in mm



Klemmbefestigungen nach AbP

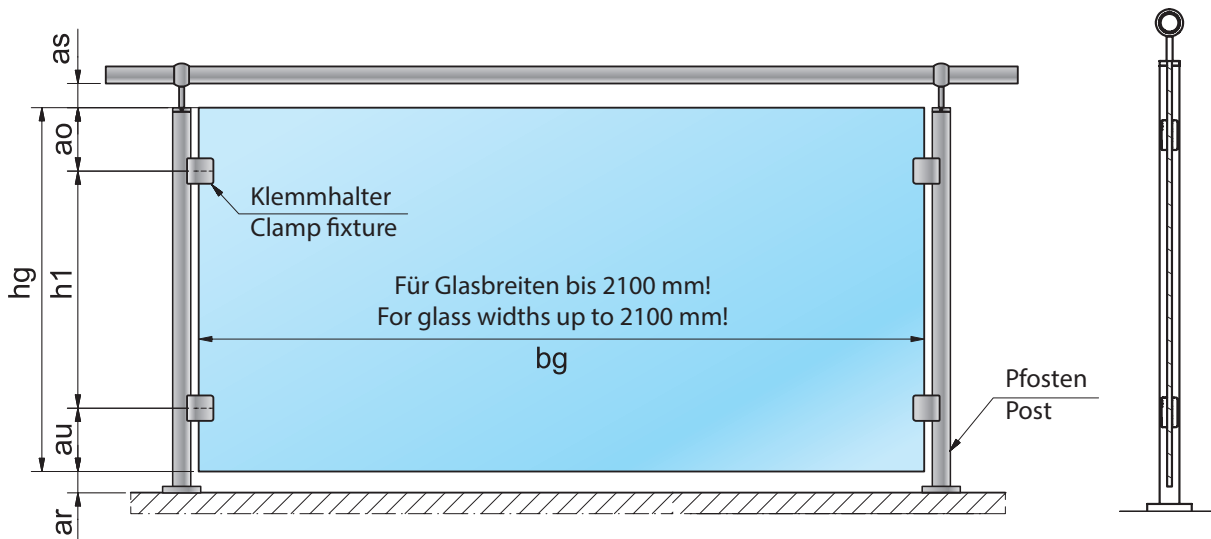
Clamp fixtures according to *AbP



*AbP = German National Technical Certification

- Bis Glasstärke 17,52 mm
- In Zink, A2 und A4
- Bis 2100 mm Glasbreite nachgewiesen
- Auch verwendbar mit Sicherungsstift oder -platte

- Glass thickness up to 17,52 mm
- In zinc, 304 and 316
- Verified glass widths up to 2100 mm
- Also usable with safety studs or plates



Alle Klemmen mit der Verwendung nach AbP ohne Sicherungsstift oder Sicherungsplatte

All clamps according to the *AbP without safety studs or safety plates

| | min. | max. |
|----|------|----------------|
| bg | 1500 | 1900 bzw. 2100 |
| ao | 150 | 250 |
| h1 | 500 | 700 |
| au | 150 | 250 |
| hg | 800 | 1000 |
| as | 10 | 30** |
| ar | 10 | 30** |

| Art.-Nr. Art.-no. | | | | |
|---------------------|------|------|------|------|
| 4812 | 4853 | 9014 | 9017 | 4890 |
| 4891 | 4893 | 9083 | 4894 | 4896 |
| 4897 | 9087 | 9324 | 9328 | 9334 |
| 9338 | 9004 | 9007 | 9304 | 9308 |
| 9461 | 9462 | 9464 | 9465 | 9471 |
| 9472 | 9474 | 9475 | | |

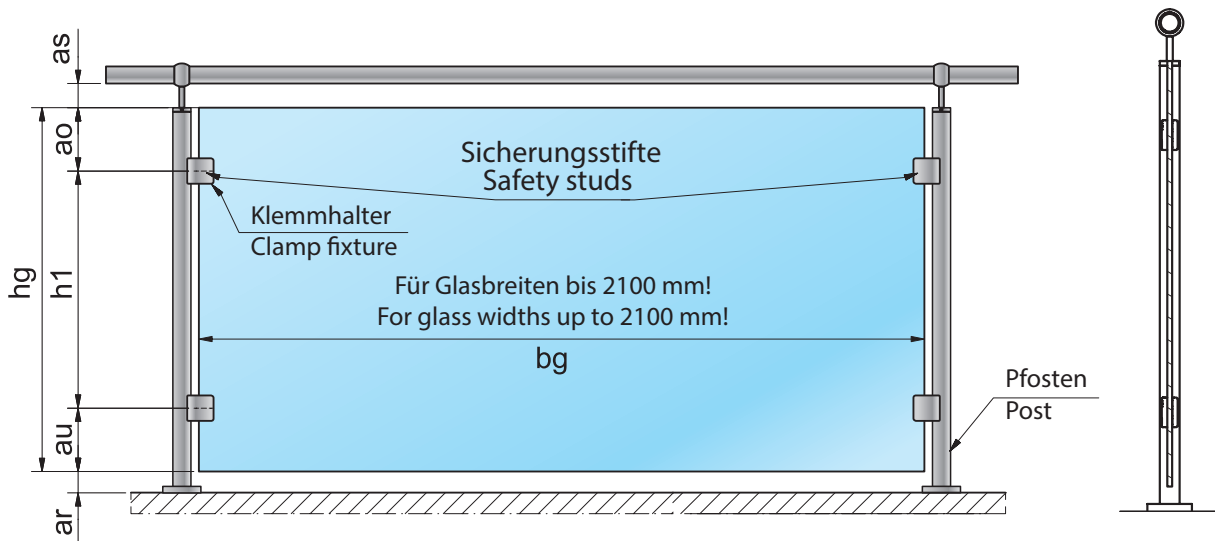
* Je nach Klemmhalterttyp und Glasaufbau
 * Depending on clamp type and glass composition
 **Ohne Kantenschutz | **Without edge protection

| Max B | VSG aus 2 x 6 ESG 0,76 PVB LSG of 2 x 6 TG and 0,76 PVB | VSG aus 2 x 6 ESG 1,52 PVB LSG of 2 x 6 TG and 1,52 PVB | VSG aus 2 x 6 TVG 0,76 PVB LSG of 2 x 6 HSG and 0,76 PVB | VSG aus 2 x 6 TVG 1,52 PVB LSG of 2 x 6 HSG and 1,52 PVB | VSG aus 2 x 8 ESG 0,76 PVB LSG of 2 x 8 TG and 0,76 PVB | VSG aus 2 x 8 ESG 1,52 PVB LSG of 2 x 8 TG and 1,52 PVB | VSG aus 2 x 8 TVG 0,76 PVB LSG of 2 x 8 HSG and 0,76 PVB | VSG aus 2 x 8 TVG 1,52 PVB LSG of 2 x 8 HSG and 1,52 PVB | * 12 ESG-H mono * 12 TGH mono |
|-------|--|---|--|--|---|---|--|--|-------------------------------------|
| 1900 | | | 4853 4812 9304 9308 4894 4891 9461 9471 | 4897 4890 9462 9472 | | 9087 | 4896 4893, 9464 9474 | 9087 9083 9465 9475 | 9007 4812 4853 9014 9004 9017 |
| 2100 | 4812 4853 9014 9017 9324 9328 9334 9338 9304 9308 4894 9004 9007 4891 9461 9471 | 4897 4890, 9462 9472 | | | 4896 4893 9464 9474 | 9087 9083 9465 9475 | | | |

Alle Angaben in mm
 All dimensions in mm

* Nicht Gegenstand des AbP, aber versuchstechnisch nachgewiesen
 * Not subject of the *AbP, but experimentally verified

*AbP = German National Technical Certification



Alle Klemmen mit der Verwendung nach AbP mit Sicherungsstift

All clamps according to the *AbP with safety studs

| | min. | max. |
|----|------|----------------|
| bg | 1500 | 1900 bzw. 2100 |
| ao | 150 | 250 |
| h1 | 500 | 700 |
| au | 150 | 250 |
| hg | 800 | 1000 |
| as | 10 | 30** |
| ar | 10 | 30** |

* Je nach Klemmhalterttyp und Glasaufbau
 * Depending on clamp type and glass composition
 **Ohne Kantenschutz | **Without edge protection

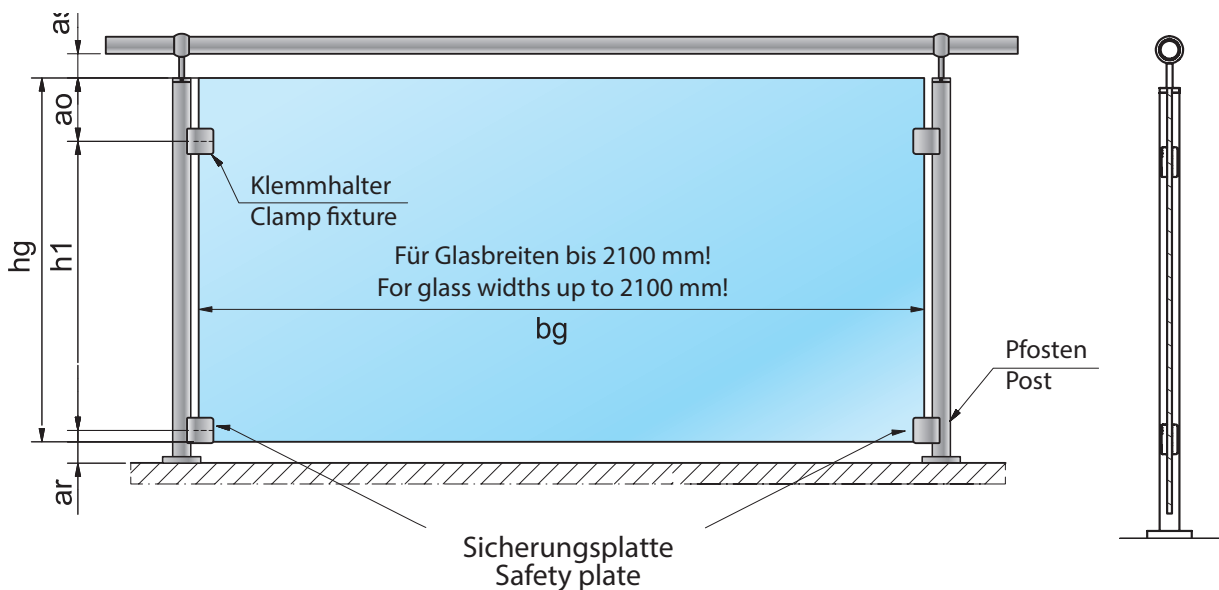
Art.-Nr. | Art.-no.

9014 9017 9324 9328

| Max B | VSG aus 2 x 6 ESG 0,76 PVB LSG of 2 x 6 TG and 0,76 PVB | VSG aus 2 x 6 ESG 1,52 PVB LSG of 2 x 6 TG and 1,52 PVB | VSG aus 2 x 6 TVG 0,76 PVB LSG of 2 x 6 HSG and 0,76 PVB | VSG aus 2 x 6 TVG 1,52 PVB LSG of 2 x 6 HSG and 1,52 PVB | VSG aus 2 x 8 ESG 0,76 PVB LSG of 2 x 8 TG and 0,76 PVB | VSG aus 2 x 8 ESG 1,52 PVB LSG of 2 x 8 TG and 1,52 PVB | VSG aus 2 x 8 TVG 0,76 PVB LSG of 2 x 8 HSG and 0,76 PVB | VSG aus 2 x 8 TVG 1,52 PVB LSG of 2 x 8 HSG and 1,52 PVB | *12 ESG-H mono *12 TGH mono |
|-------|--|--|--|--|--|--|--|--|--------------------------------|
| 1900 | 9014 9017 9324 9328 | | | | | | | | 9014 9017 |
| 2100 | | | | | | | | | |

Alle Angaben in mm
 All dimensions in mm

* Nicht Gegenstand des AbP, aber versuchstechnisch nachgewiesen
 * Not subject of the *AbP, but experimentally verified



Alle Klammern mit der Verwendung nach AbP mit Sicherungsplatte

All clamps according to the *AbP with safety plates

| | min. | max. | Art.-Nr. Art.-no. | | | | |
|----|--|----------------|---------------------|------|------|------|------|
| bg | 1500 | 1900 bzw. 2100 | 4890 | 4891 | 4893 | 4894 | 4896 |
| ao | 150 | 250 | 4897 | 9004 | 9007 | 9083 | 9087 |
| h1 | *** Entsprechend verwendeter Klemme According to the used clamp | | 9334 | 9338 | 9461 | 9462 | 9464 |
| hg | 800 | 1000 | 9471 | 9472 | 9474 | 9465 | |
| as | 10 | 30** | 9475 | | | | |
| ar | 10 | 30** | | | | | |

* Je nach Klemmhalterttyp und Glasaufbau
 * Depending on clamp type and glass composition
 **Ohne Kantenschutz | **Without edge protection
 ***Je nach verwendeter Klemme
 ***Depending on the clamps used

| Max B | VSG aus 2 x 6 ESG 0,76 PVB LSG of 2 x 6 TG and 0,76 PVB | VSG aus 2 x 6 ESG 1,52 PVB LSG of 2 x 6 TG and 1,52 PVB | VSG aus 2 x 6 TVG 0,76 PVB LSG of 2 x 6 HSG and 0,76 PVB | VSG aus 2 x 6 TVG 1,52 PVB LSG of 2 x 6 HSG and 1,52 PVB | VSG aus 2 x 8 ESG 0,76 PVB LSG of 2 x 8 TG and 0,76 PVB | VSG aus 2 x 8 ESG 1,52 PVB LSG of 2 x 8 TG and 1,52 PVB | VSG aus 2 x 8 TVG 0,76 PVB LSG of 2 x 8 HSG and 0,76 PVB | VSG aus 2 x 8 TVG 1,52 PVB LSG of 2 x 8 HSG and 1,52 PVB | * 12 ESG-H mono * 12 TGH mono |
|-------|--|--|--|--|--|--|--|--|----------------------------------|
| 1900 | 9334 9338 4897 4894 9004 9007 4891 9461 9471 | 4897 4890, 9462 9472 | | | 4896 4893, 9464 9474 | 9087 9083 9465 9475 | | | 9004 9007 |
| 2100 | | | | | | | | | |

Alle Angaben in mm
All dimensions in mm

* Nicht Gegenstand des AbP, aber versuchstechnisch nachgewiesen
* Not subject of the *AbP, but experimentally verified

cp-mini | cp-mini

| | |
|------------------------------|-----|
| Befestigungssystem cp-mini | |
| Support system cp-mini | 216 |
| Zubehör | |
| Accessories | 232 |

cp-mini

cp-mini





- Glashaltesystem für Brüstungsverglasungen aus A2
- Keine Glasbearbeitung erforderlich
- Modelle mit stufenloser Einstellung für den Einsatz an Treppengeländern
- Hohe Transparenz durch Eckbefestigung

- Glass supporting system for balustrade glazing in 304
- No glass preparation required
- Adjustable models for use on stair cases
- High transparency with corner support



Befestigungssystem cp-mini

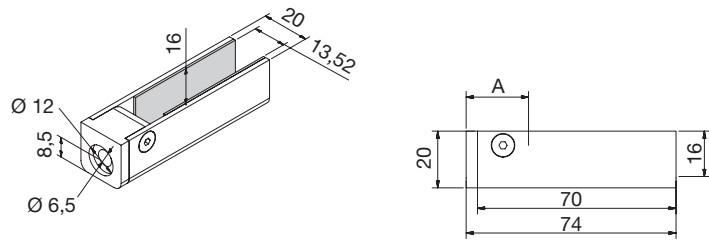
Support system cp-mini



[Eckige Form | Square shape]

AbP = German National Technical Certification

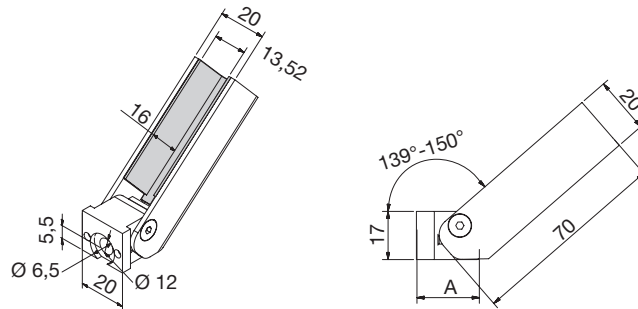
cp-mini Edelstahl (A2) | cp-mini Stainless steel (304)



| cp-mini | | | | |
|---------------------|----------|----------------------|-----------------------------|---|
| Art.-Nr. Art.no. | | Sicherheit Safety | Info | |
| 9410VA | 13,52 mm | | 180° gerade 180° straight | • |



cp-mini Edelstahl (A2) | cp-mini Stainless steel (304)

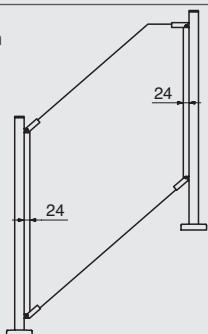


| cp-mini | | | | |
|---------------------|----------|-------------------------------------|------|---|
| Art.-Nr. Art.no. | | Treppenneigung Stair inclination | Info | |
| 9411VA | 13,52 mm | 30° - 41° | | • |

Info

Abzugsmaß [A] | Reduction dimension

A = 24 mm



Oberfläche | Surface



VA

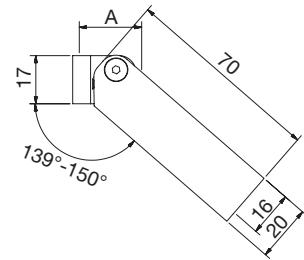
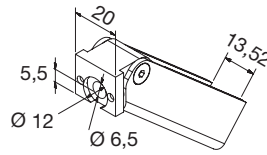
Zubehör | Accessories


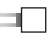


S6912A2D6x30

* AbP = German National Technical Certification

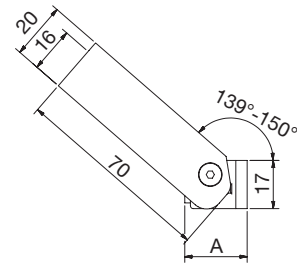
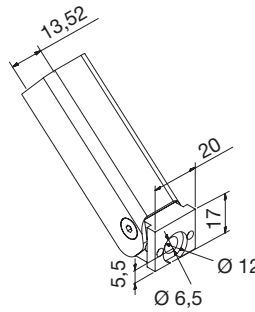
cp-mini Edelstahl (A2) | cp-mini Stainless steel (304)


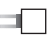


| cp-mini | | | |
|----------|---|-------------------|---|
| Art.-Nr. |  | Treppenneigung |  |
| Art.-no. | | Stair inclination | |
| 9412VA | 13,52 mm | 30° – 41° | • |



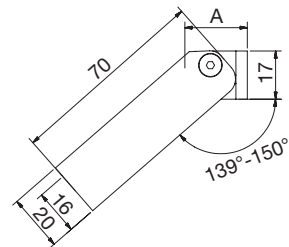
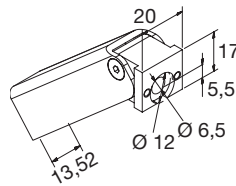
cp-mini Edelstahl (A2) | cp-mini Stainless steel (304)


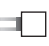


| cp-mini | | | |
|----------|---|-------------------|---|
| Art.-Nr. |  | Treppenneigung |  |
| Art.-no. | | Stair inclination | |
| 9413VA | 13,52 mm | 30° – 41° | • |



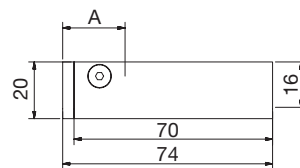
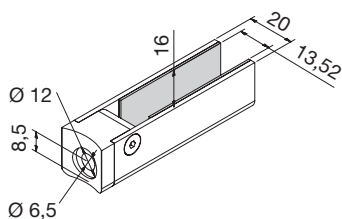
cp-mini Edelstahl (A2) | cp-mini Stainless steel (304)



| cp-mini | | | |
|----------|---|-------------------|---|
| Art.-Nr. |  | Treppenneigung |  |
| Art.-no. | | Stair inclination | |
| 9414VA | 13,52 mm | 30° – 41° | • |



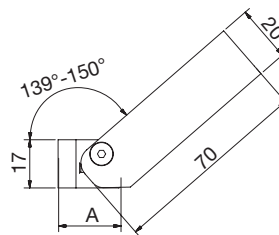
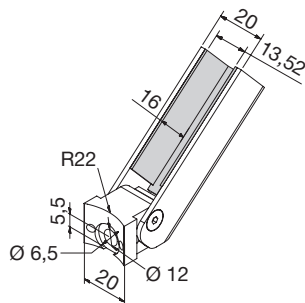
cp-mini Edelstahl (A2) | cp-mini Stainless steel (304)



| cp-mini | | | | |
|---------------------|----------|----------------------|-----------------------------|-------|
| Art.-Nr. Art.no. | | Sicherheit Safety | Info | |
| 9420VA | 13,52 mm | | 180° gerade 180° straight | • R22 |



cp-mini Edelstahl (A2) | cp-mini Stainless steel (304)

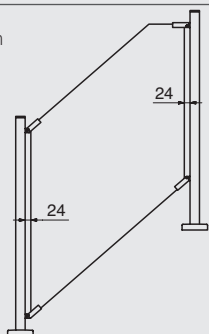


| cp-mini | | | | |
|---------------------|----------|-------------------------------------|--|-------|
| Art.-Nr. Art.no. | | Treppenneigung Stair inclination | | |
| 9421VA | 13,52 mm | 30° - 41° | | • R22 |

Info

Abzugsmaß [A] | Reduction dimension

A = 24 mm

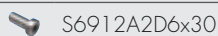


Oberflächen | Surface



VA

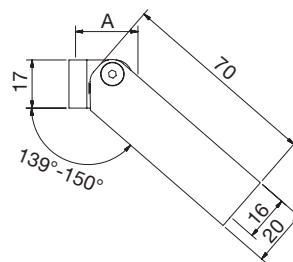
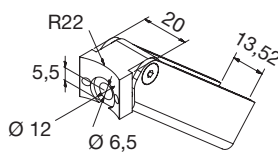
Zubehör | Accessories



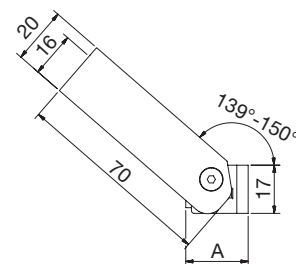
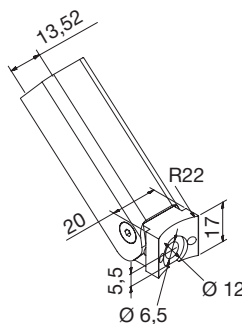
S6912A2D6x30

* AbP = German National Technical Certification

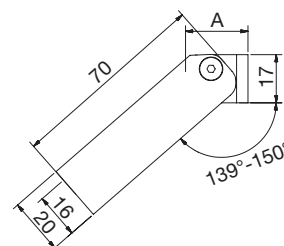
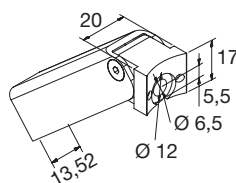
cp-mini Edelstahl (A2) | cp-mini Stainless steel (304)



| cp-mini | | | |
|---------------------|----------|-------------------------------------|-------|
| Art.-Nr. Art.no. | | Treppenneigung Stair inclination | |
| 9422VA | 13,52 mm | 30° – 41° | • R22 |



| cp-mini | | | |
|---------------------|----------|-------------------------------------|-------|
| Art.-Nr. Art.no. | | Treppenneigung Stair inclination | |
| 9423VA | 13,52 mm | 30° – 41° | • R22 |



| cp-mini | | | |
|---------------------|----------|-------------------------------------|-------|
| Art.-Nr. Art.no. | | Treppenneigung Stair inclination | |
| 9424VA | 13,52 mm | 30° – 41° | • R22 |